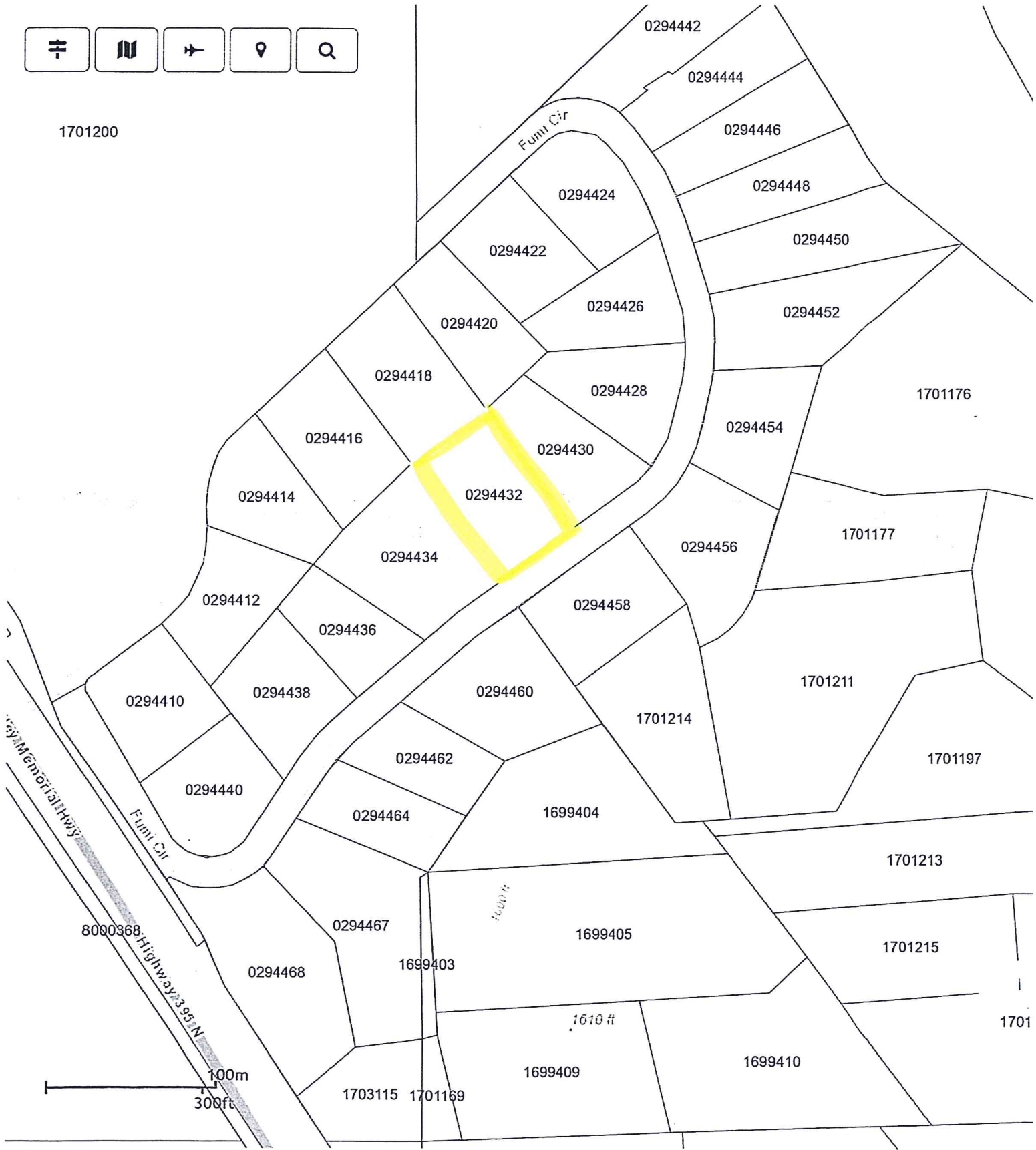
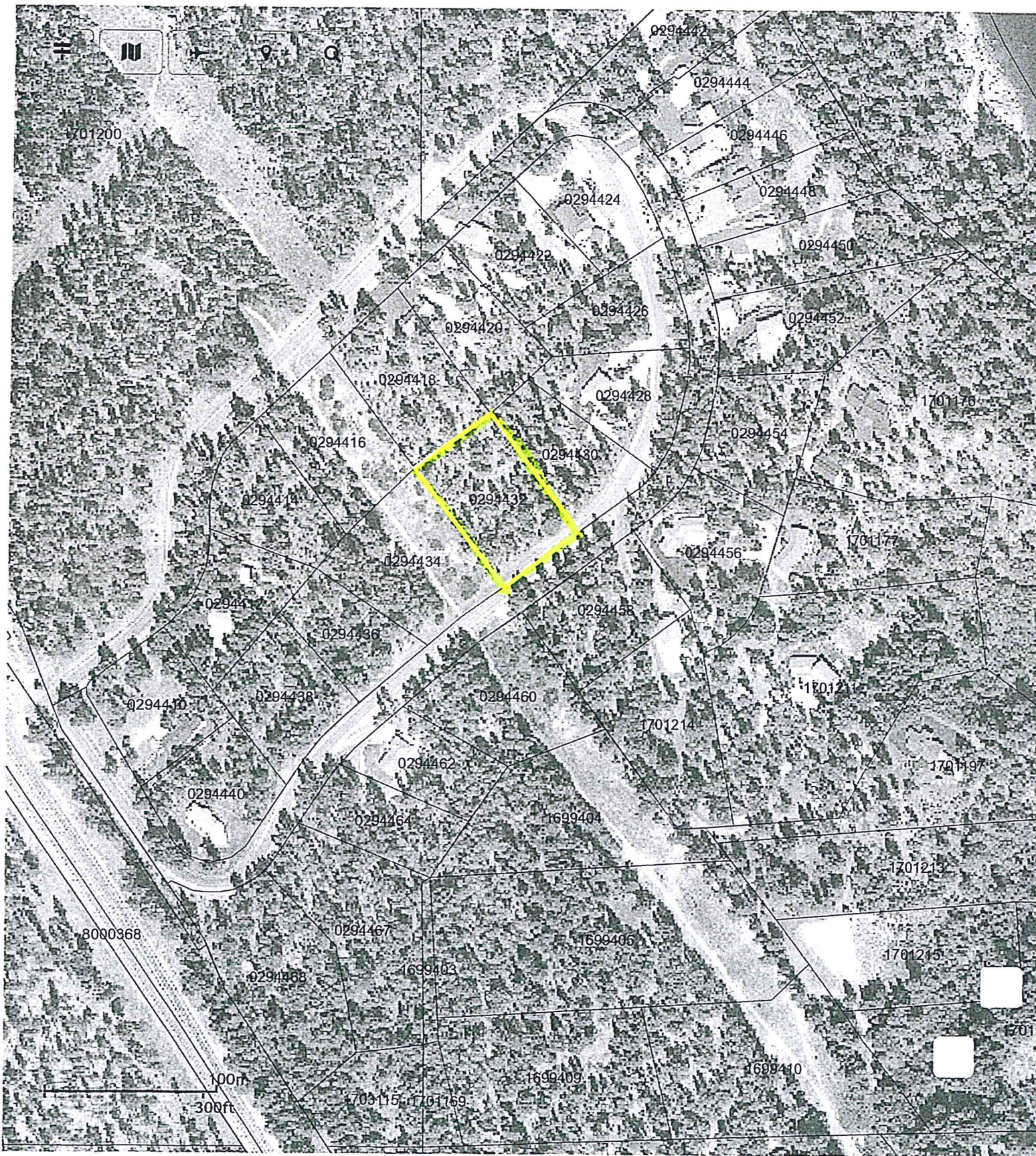
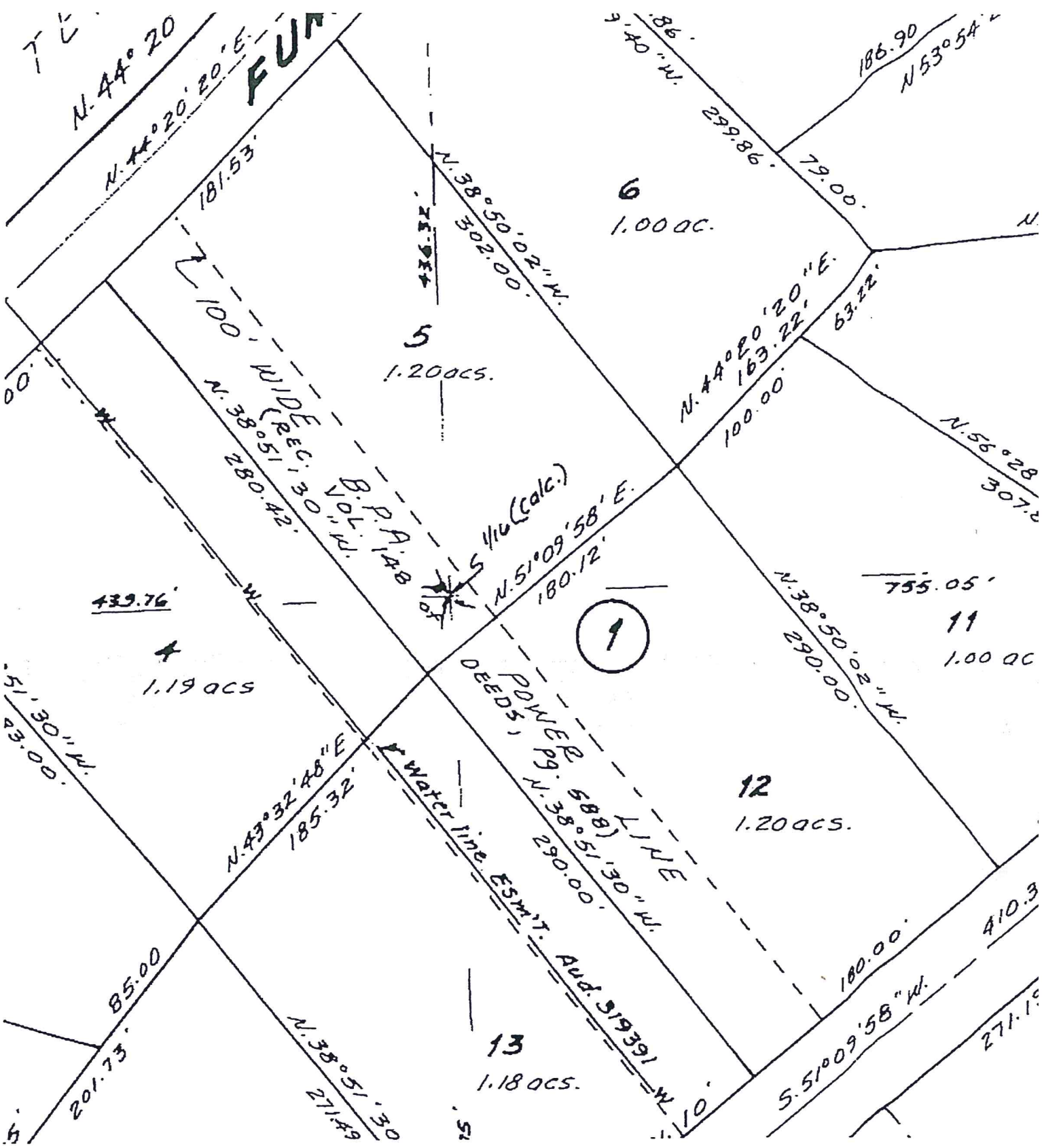


1701200







7 C
N. 44° 20'

N. 44° 20' 20" E.
181.53'

FUR

N. 38° 50' 02" W.
302.00'

186.90
N. 53° 54' 4"
299.86'
79.00'

6
1.00 ACS.

5
1.20 ACS.

N. 44° 20' 20" E.
163.22'
100.00'

N. 56° 28'
307.2'

439.76'
4
1.19 ACS

N. 51° 09' 58" E.
180.12'
S 1/16 (Calc.)

9

755.05'
11
1.00 ACS

51° 30' W.
203.00'

N. 43° 32' 48" E.
185.32'

POWER P. 9
N. 38° 51' 30" W.
290.00'

12
1.20 ACS.

N. 38° 50' 02" W.
290.00'

85.00
201.73'

N. 38° 51' 30"
271.49'

13
1.18 ACS.

Water line ESM'T. Aud. 319391 W. 10.
290.00'

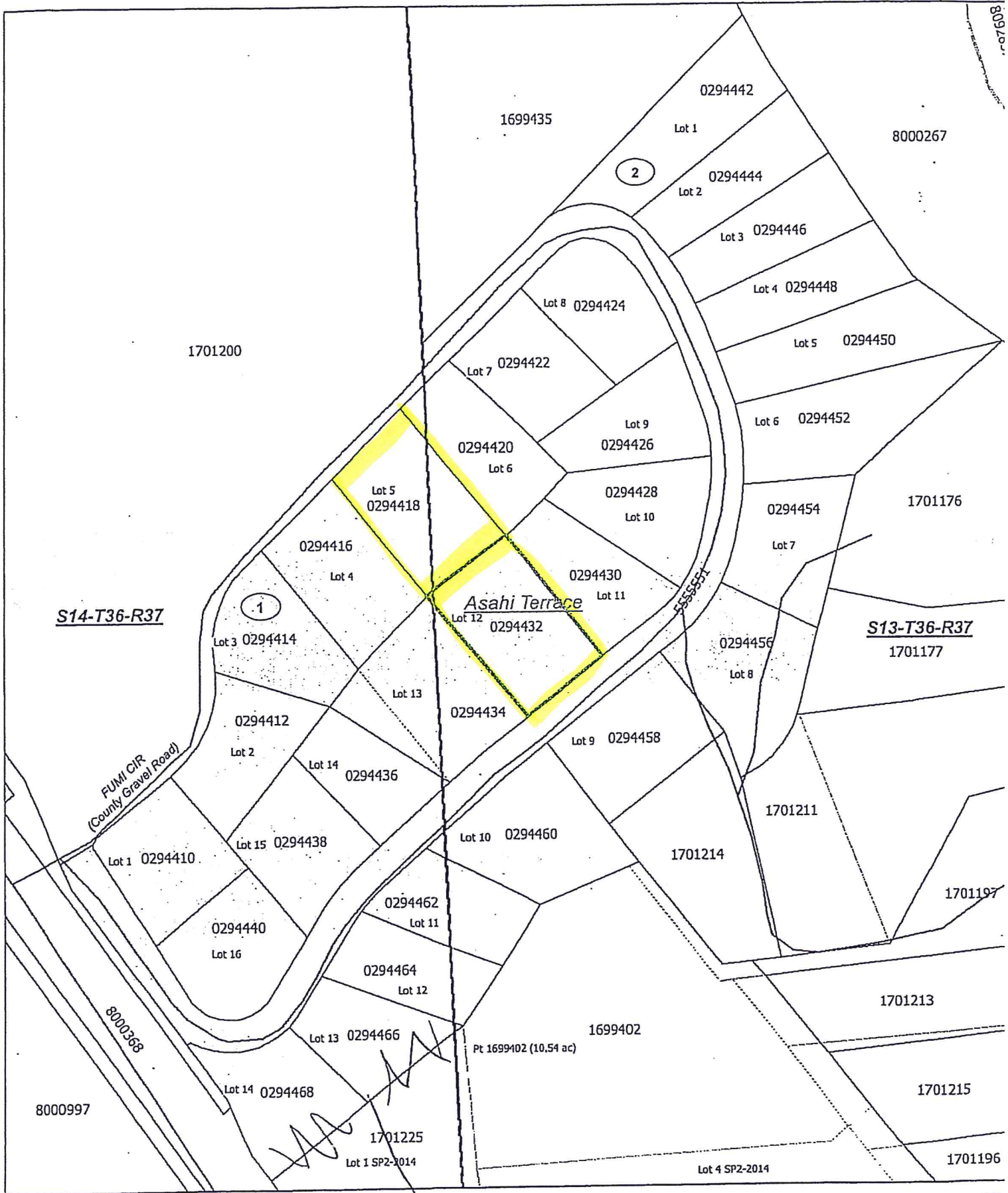
180.00'
S. 51° 09' 58" W.
271.19'

410.3

Stevens County Title Company

280 S Oak - 100 E Birch, Colville, WA 99114
(Ph) 509-684-4589 - (Fx) 509-684-5448

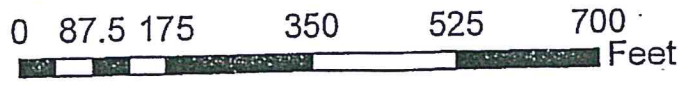
11/16/17



S14-T36-R37

S13-T36-R37

Asahi Terrace



This sketch is furnished for your information only. The Company has not surveyed the premises and assumes no liability for any inaccuracy therein.