

RECORD OF SURVEY

SECTION 15, TOWNSHIP 37 NORTH, RANGE 33 EAST W.M. FERRY COUNTY, WASHINGTON

CORNER NOTES

- △ NORTHWEST CORNER SECTION 15 - FOUND 3/4" DIAMETER BRASS CAP SET BY B.L.M. IN 1963. FOUND FOUR LIVING B.T.S.: A 12" FIR BEARS 5'40" W, 25.3 FT.; A 12" FIR BEARS N 21° W, 145 FT.; AN 8" FIR BEARS N 102° E, 40.0 FT.; AN 18" FIR BEARS S 153° 1/4' W, 54.4 FT. AS PER RECORD.
- △ NORTH QUARTER CORNER SECTION 15 - FOUND 3/4" DIAMETER BRASS CAP SET BY B.L.M. IN 1963. FOUND TWO LIVING B.T.S.: A 16" FIR BEARS 200° 4' E, 25.0 FT.; ALSO, A 24" FIR BEARS N 55 1/2° E, 17.6 FT.
- △ NORTHEAST CORNER SECTION 15 - FOUND 3/4" DIAMETER BRASS CAP SET BY B.L.M. IN 1963. FOUND TWO LIVING B.T.S.: A 16" FIR BEARS N 89° 1/4' E, 20.0 FT.; ALSO, A 16" FIR BEARS S 74 1/2° E, 48.8 FT.
- △ EAST QUARTER CORNER SECTION 15 - FOUND 3/4" DIAMETER BRASS CAP SET BY B.L.M. IN 1963. FOUND TWO LIVING B.T.S.: A 14" FIR BEARS S 54 1/2° E, 20.6 FT.; ALSO, A 24" FIR BEARS S 25 1/2° W, 54.8 FT. AS PER RECORD.
- △ SOUTHEAST CORNER SECTION 15 - FOUND EXISTING 5/8" x 3/8" REBAR WITH ALUMINUM CAP. SEE CORNER NOTES FOR NE CORNER SECTION 22 AS PER RECORD OF SURVEY, SECTION 22.
- △ SOUTH QUARTER CORNER SECTION 15 - ORIGINAL STONE MONUMENT. SEE CORNER NOTES FOR NORTH QUARTER CORNER SECTION 22 AS PER RECORD OF SURVEY, SECTION 22.
- △ SOUTHWEST CORNER SECTION 15 - ORIGINAL STONE MONUMENT. SEE CORNER NOTES FOR NW CORNER SECTION 22 AS PER RECORD OF SURVEY, SECTION 22.
- △ WEST QUARTER CORNER SECTION 15 - FOUND 3/4" x 3/4" x 2" BOULDER IN PLACE AS PER C.L.O. SURVEY RECORDS. ALSO, FOUND TWO LIVING B.T.S.: A 12" FIR BEARS S 84° 1/4' W, 20.0 FT.; ALSO, A 12" FIR BEARS S 84° 1/4' W, 20.0 FT. WITH REMAINS OF A 30" PINE BEARS 56.43 1/4' W, 91.7 FT. C.L.O. 1991. SET TWO NEW B.T.S.: A 12" FIR BEARS N 54° W, 81.9 FT.; ALSO, A 12" FIR BEARS N 77° E, 81.5 FT.

200822

AUDITOR'S CERTIFICATE
 FILED FOR RECORD THIS 21st DAY OF
 GEORGE 1985 AT 10:00 AM IN BOOK 2
 OF SURVEYS AT PAGE 223 AT THE
 REQUEST OF GRANT TOLTON.

Richard M. ...
 COUNTY AUDITOR

SURVEYORS CERTIFICATE
 THIS MAP CORRECTLY REPRESENTS
 A SURVEY MADE BY ME OR UNDER
 MY DIRECTION IN CONFORMANCE
 WITH THE REQUIREMENTS OF THE
 SURVEY RECORDING ACT AT THE
 REQUEST OF BOY LELAND.

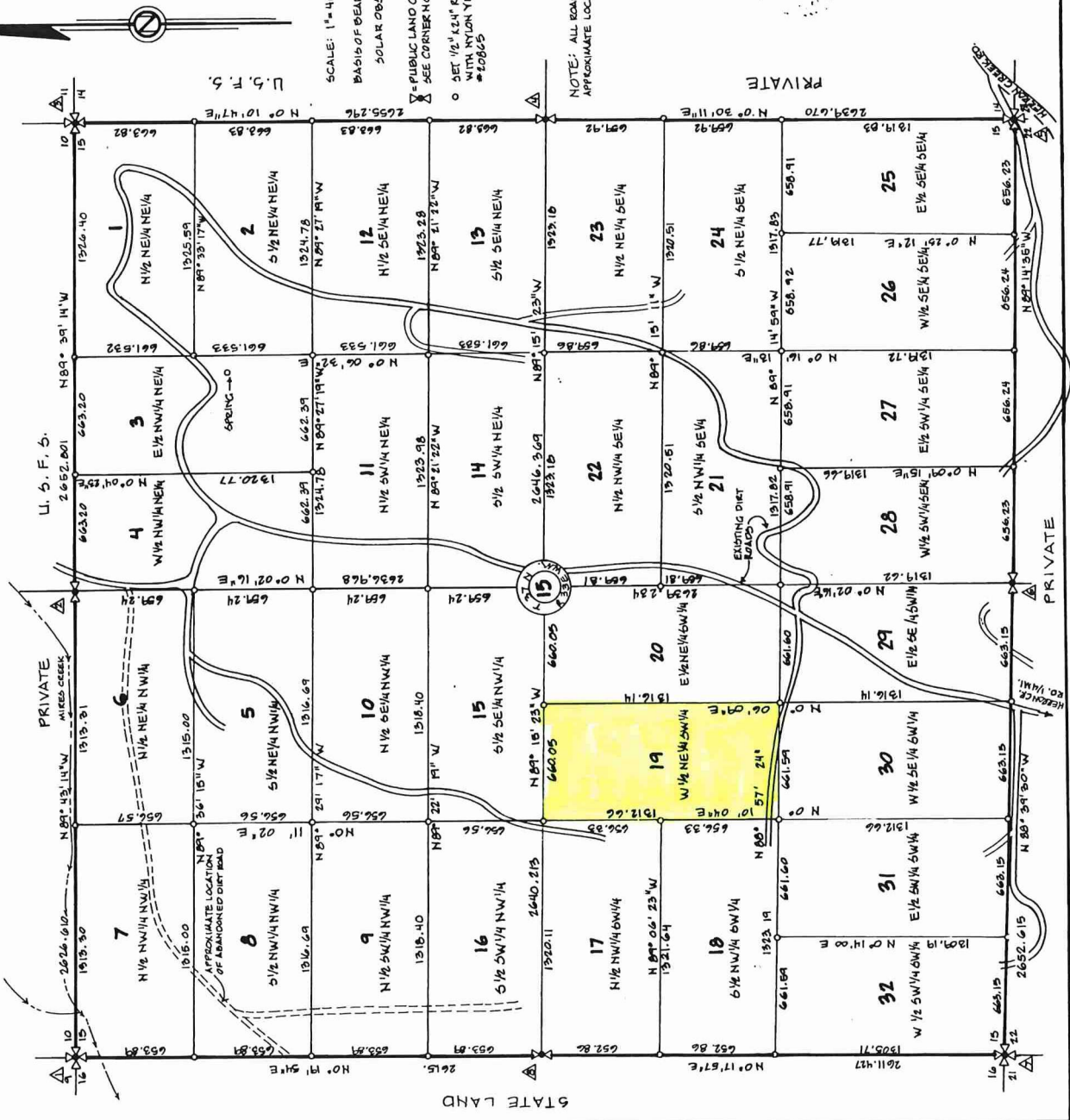
Boyd Leland
 CERTIFICATE NO. 20865

BOUNDARY SURVEY FOR:

LELAND COMPANY
 WEST 1520 3RD AVE. SPOKANE, WASH. 99204

BY:

MID-MOUNTAIN SURVEYORS
 PROFESSIONAL LAND SURVEYORS
 P.O. BOX 275
 CULLEN, WASHINGTON 99118



NOTE: ALL BOUNDS ARE
 APPROXIMATE LOCATION.

