



Auditor File #:2022-0004864

Recorded at the request of:
GLAHE & ASSOCIATES

06/03/2022 03:47 PM Pages: 1 of 2
Fees: \$282.50

Stevens County Washington
Lori Larsen Auditor
fc

SURVEY

OWNERS: HANCOCK NATURAL RESOURCES GROUP

TO SURVEY

FILED BY: GLAHE & ASSOCIATES

SURVEYOR: DAVID P. EVANS

SURVEY BOOK 42

PAGE(S) 127 & 128

LEGAL DESCRIPTION:

SECTION 27	TWP 39	RGE 40
SECTION	TWP	RGE
SECTION	TWP	RGE
SECTION	TWP	RGE
SECTION	TWP	RGE
SECTION	TWP	RGE

ADDITIONAL INFORMATION:

**IMAGE NOT
AVAILABLE
AT THIS
TIME**

RECORD OF SURVEY

101

HANCOCK NATURAL RESOURCE GROUP
IN SECTION 27, T.39 N., R.40E, W.M.,
STEVENS COUNTY, WASHINGTON

LEGEND

- Found Quarter/Sec Corner (as noted)
Calc. Quarter/Sec Corner (as noted)
Set a 30 in. aluminum breakaway monument with 3/4 in. aluminum cap, stamped P.L.S. No. 20679.

Method of Survey: The control survey was by GPS static and RTK observations. The control survey was by GPS static and RTK observations. Data processed using NGS OPUS. Static positioning for base points and Trimble Business Center software. The survey was completed by conventional traverse and radial techniques using a total station. All procedures meet or exceed WAC 332-130-090 requirements.

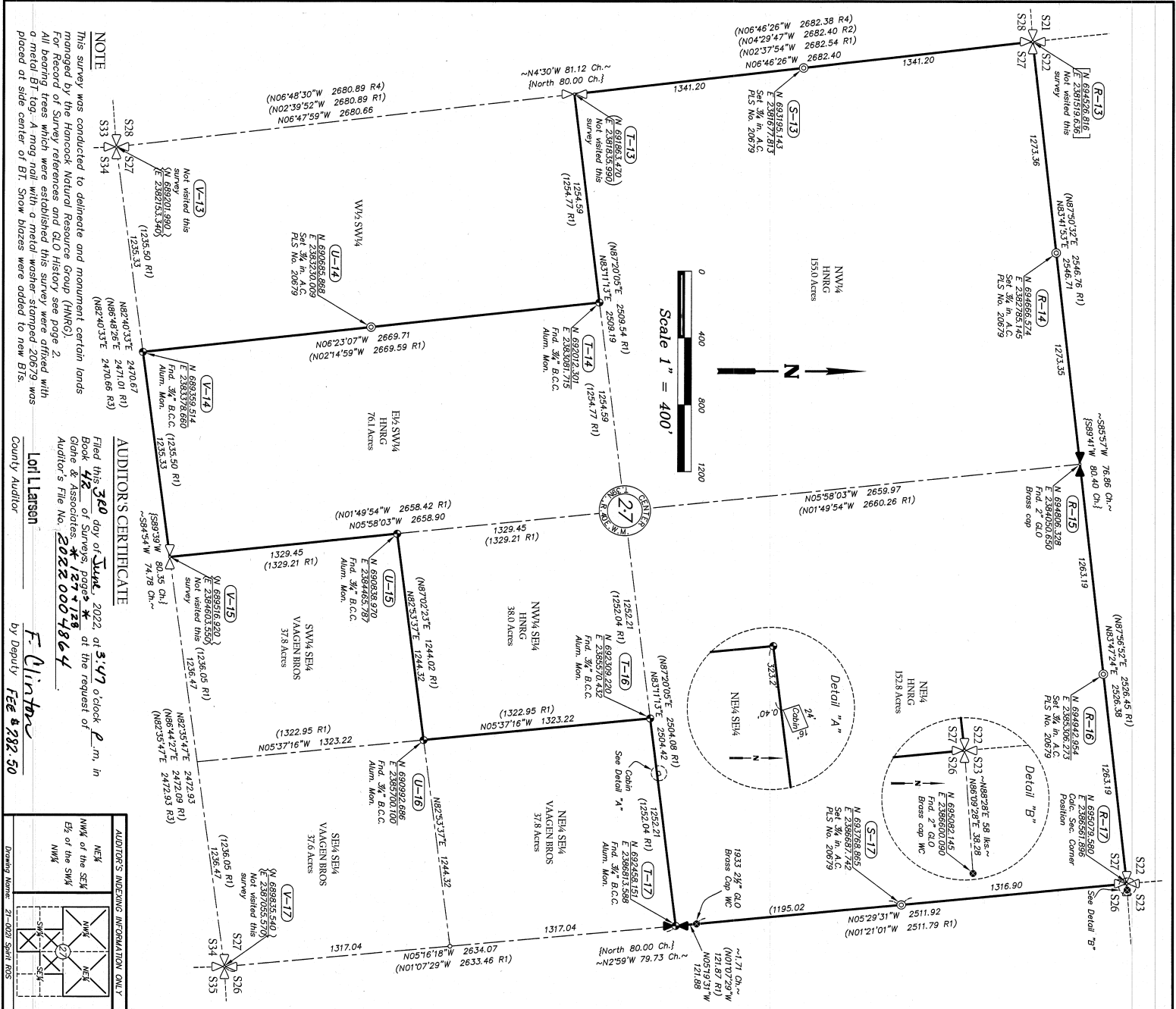
METHOD OF SURVEY

BASIS OF BEARINGS

Bearing Datum is Washington Lambert Grid North Zone, NAD 83. Derived from GPS static observations with Trimble R-8, Dual Frequency Receivers. The project GPS control coordinates were derived from NGS Opus Solutions using a reference frame of NAD 83 (2011)(Epoch:2010.0000) from the following base stations: DK4088 BREW BREWSTER ALBA CORS APP; DM5852 RKO1 GROVWILLE AIRPORT CORS APP; DK3591 SPNS SPOKANE 5 CORS APP.

SURVEYOR'S CERTIFICATE

I, David P. Evans, P.L.S. 20679, do hereby certify that this map represents a survey made by me or under my direction in accordance with the Survey Recording Act of the request of Hancock Natural Resources Group.



NOTE: This survey was conducted to delineate and monument certain lands managed by the Hancock Natural Resource Group (HNRG) for Record of Survey purposes and G.O. History. See page 2.

AUDITOR'S CERTIFICATE

Filed this 3rd day of June, 2022 at 3:47 o'clock p.m. in Book 42 of Surveys, pages 127-128. G.D. & Associates, at the request of the Auditor's File No. 20220004864.

AUDITOR'S INDEXING INFORMATION ONLY. Includes NW/4, SW/4, SE/4, NE/4 grid and a table with columns for Range, Meridian, and Section.

Professional information for Alan E. & Associates, including address (303 Church Street, Sandpoint, Idaho 83864) and phone number (208-265-4474).

REFERENCES

- (R1) ROS by Lawrence L. Leinweber, PLS No. 13775, ARN 522175, September 20, 1982
- (R2) ROS by Grant D. Tolton, PLS No. 20865, ARN 20120004830, June 27, 2012
- (R3) ROS by John L. Dunn, PLS No. 38492, ARN 20190000854, February 8, 2019
- (R4) ROS by Grant Dorman, PLS No. 53032, ARN 20200000966, February 20, 2020

GLO HISTORY

(R4d) Bearing and Distance per GLO Plat by David C. Thoyer, June 28, 1884.
 Contact No. 307

~B&D~ Bearing and Distance per GLO Plat by Walker D. Long, July 15, 1932.
 Group No. 136

TOWNSHIP 39 NORTH, RANGE 40 EAST

(R-14)

GLO-Not set by GLO

David P. Evans, PLS No. 20679, 2021

A 3/4 ins. aluminum breakaway monument, from which:
 A Douglas-fir, 10 ins. diam., bears S88E, 3.2 ft. dist., scribbed "W/1/6 S27 BT."
 A Douglas-fir, 16 ins. diam., bears S37E, 39.3 ft. dist., scribbed "W/1/6 S27 BT."

(R-15)

GLO- David C. Thoyer, October 18, 1884

Set a granite stone 12x10x5 ins., 8 ins. in the ground, for 1/4 Sec. Cor., marked 1/4 on N. face, and raised a mound of stone, alongside, from which:
 A fir, 20 ins. diam., bears N65E, 85 lbs. dist., marked 1/4 S BT
 A fir, 15 ins. diam., bears S23W, 47 lbs. dist., marked 1/4 S BT
 A 12" fir bears S61W, 20.73' scribbed 1/4 S27 BT

GLO- Walker D. Long, July 15, 1932

Set on iron post, 3 ft. long, 1 inch diam., 24 ins. in the ground, for 1/4 sec. cor., with brass cap, from which:
 A fir, 22 ins. diam., bears N48E, 1.88 chs. dist., marked 1/4 S27 BT.
 A fir, 18 ins. diam., bears S44E, 1.24 chs. dist., marked 1/4 S27 BT.

(R-16)

GLO-Not set by GLO

David P. Evans, PLS No. 20679, 2021

A 3/4 ins. aluminum breakaway monument, from which:
 A Douglas-fir, 6 ins. diam., bears N15E, 34.5 ft. dist., scribbed "E1/16 S22 BT."
 A Douglas-fir, 4 ins. diam., bears N38E, 24.6 ft. dist., scribbed "E1/16 S22 BT."



(R-17)

GLO- David C. Thoyer, October 18, 1884

Set a post 3 ft. long, 3/4 ins. square, 24 ins. in the ground, for Cor. to Secs. 21, 22, 27 and 28 north of on S and 3 north of on E, angles, from which:
 A fir, 30 ins. diam., bears N65E, 55 lbs. dist., marked 139N R40E S22 BT.
 A fir, 26 ins. diam., bears S50E, 18 lbs. dist., marked 139N R40E S22 BT.
 A fir, 15 ins. diam., bears S75W, 28 lbs. dist., marked 139N R40E S22 BT.
 A fir, 10 ins. diam., bears N35W, 17 lbs. dist., marked 139N R40E S21 BT.

GLO- Walker D. Long, July 15, 1932

Set on iron post, 2 ft. long, 1 inch diam., 27 feet on steep slope of ledge where it is impracticable to establish a corner. At a point, N8829E, 58 lbs. distant. Set on iron post, 3 ft. long, 2 inch diam., 24 ins. in the ground, for witness corner of secs. 22, 23, 26, and 27, with brass cap, from which:
 A fir, 12 ins. diam., bears N9E, 105 lbs. dist., marked W C 139N R40E S23 BT.
 A fir, 30 ins. diam., bears S44E, 80 lbs. dist., marked W C 139N R40E S26 BT.
 A fir, 30 ins. diam., bears S23W, 167 lbs. dist., marked W C 139N R40E S27 BT.
 A fir, 12 ins. diam., bears N28W, 139 lbs. dist., marked W C 139N R40E S28 BT.

(S-13)

GLO-Not set by GLO

David P. Evans, PLS No. 20679, 2021

A 2 1/2 ins. GLO brass cap WC on an iron rod in rock cahn, from which:
 A Douglas-fir, 24 ins. diam., bears N12E, 69.5 ft. dist., w/healed cut face.
 A Douglas-fir, 28 ins. diam., bears N26W, 92.3 ft. dist., w/healed cut face.

GLO-Not set by GLO

David P. Evans, PLS No. 20679, 2021

A 3/4 ins. aluminum breakaway monument, from which:
 A ponderosa pine, 28 ins. diam., bears S55W, 0.6 ft. dist., scribbed "W/1/6 S28 BT."
 A cedar, 21 ins. diam., bears N54W, 2.3 ft. dist., scribbed "W/1/6 S28 BT."

(S-17)

GLO-Not set by GLO

David P. Evans, PLS No. 20679, 2021

Set:
 A 3/4 ins. aluminum breakaway monument, from which:
 A cedar, 9 ins. diam., bears S14W, 14.5 ft. dist., scribbed "W/1/6 S27 BT."
 A tamarack, 8 ins. diam., bears N65W, 8.9 ft. dist., scribbed "W/1/6 S27 BT."

(T-14)

GLO-Not set by GLO

ROS by Lawrence L. Leinweber, PLS No. 13775, ARN 520128, 1982

CM/1/6 Cor. Sec. 27 set 3/4" BCC aluminum monument, from which:
 A 15' cedar bears N7W, 20.73' scribbed CM/1/6 S27 BT.
 A 6' fir bears N89W, 10.13' scribbed CM/1/6 S27 BT.

David P. Evans, PLS No. 20679, 2021

Found:
 A 3/4 in. aluminum BCC monument, from which:
 A Douglas-fir, 13 ins. diam., bears N78W, 19.3 ft. dist., w/healed cut face & visible scribbing.
 A dead standing grand fir, 12 ins. diam., bears N89E, 10.1 ft. dist.
 A grand fir, 11 ins. diam., bears west, 3.0 ft. dist., scribbed "C-W 1/16 S27 BT."

(V-16)

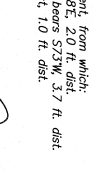
GLO-Not set by GLO

ROS by Lawrence L. Leinweber, PLS No. 13775, ARN 520128, 1982

CE/1/6 Cor. Sec. 27 set 3/4" BCC aluminum monument, from which:
 A 17' fir bears N18W, 7.01' scribbed CE/1/6 S27 BT.
 A 6' tamarack bears S73W, 3.69' scribbed CE/1/6 S27 BT.

David P. Evans, PLS No. 20679, 2021

Found:
 A 3/4 in. aluminum BCC monument, from which:
 A Douglas-fir, 12 ins. diam., bears N88E, 2.0 ft. dist.
 A ponderosa pine, 6 ins. diam., bears S73W, 3.3 ft. dist.
 A corsonite post bears northwest, 1.0 ft. dist.



RECORD OF SURVEY

HANCOCK NATURAL RESOURCE GROUP
 IN SECTION 27, T.39 N., R.40E, W.M.,
 STEVENS COUNTY, WASHINGTON

(T-17)

GLO- David C. Thoyer, October 18, 1884

Set a post 3 ft. long, 3/4 ins. square, 24 ins. in the ground, for 1/4 Sec. Cor., marked 1/4 S on W face, from which:
 A fir, 35 ins. diam., bears N60W, 75 lbs. dist., marked 1/4 S BT.
 A fir, 10 ins. diam., bears S30E, 45 lbs. dist., marked 1/4 S BT.

(U-14)

GLO-Not set by GLO

David P. Evans, PLS No. 20679, 2021

A 3/4 in. aluminum BCC monument, from which:
 A cedar, 20 ins. diam., bears S35E, 17.2 ft. dist., w/healed cut face.
 A cedar, 29 ins. diam., bears S18W, 4.5 ft. dist., w/healed cut face.

(U-15)

GLO-Not set by GLO

ROS by Lawrence L. Leinweber, PLS No. 13775, ARN 520128, 1982

CS/1/6 Cor. Sec. 27 set 3/4" BCC aluminum monument, from which:
 An 8' tamarack bears N7W, 18.73' scribbed CS/1/6 S27 BT.
 A 15' fir bears S39W, 19.63' scribbed CS/1/6 S27 BT.

David P. Evans, PLS No. 20679, 2021

Found:
 A 3/4 in. aluminum BCC monument, from which:
 A Douglas-fir, 20 ins. diam., bears S59W, 19.6 ft. dist., w/healed cut face.
 A tamarack, 12 ins. diam., bears N7W, 18.4 ft. dist., w/healed cut face.
 A grand fir, 11 ins. diam., bears west, 3.0 ft. dist., scribbed "C-W 1/16 S27 BT."

(U-16)

GLO-Not set by GLO

ROS by Lawrence L. Leinweber, PLS No. 13775, ARN 520128, 1982

SE/1/6 Cor. Sec. 27 set 3/4" BCC aluminum monument, from which:
 An 10' tamarack bears N65W, 25.00' scribbed SE/1/6 S27 BT.
 A 12' cedar bears S44W, 12.60' scribbed SE/1/6 S27 BT.

David P. Evans, PLS No. 20679, 2021

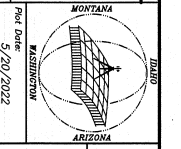
Found:
 A 3/4 in. aluminum BCC monument, from which:
 A cedar, 9 ins. diam., bears N13E, 15.0 ft. dist., open cut face.
 A cedar, 14 ins. diam., bears S40E, 19.2 ft. dist., heeled cut face.



20220004864

AUDITOR'S INDEXING INFORMATION ONLY

NEW NW/4 of the SW/4	NEW NW/4
ES of the SW/4	NW/4



HANCOCK NATURAL RESOURCE

GLAHE & ASSOCIATES
 PROFESSIONAL LAND SURVEYORS
 303 Church Street
 Sandpoint, Idaho 83864
 208-265-4474

Scale: N/A
 Checked By: [Signature]
 Dated: [Date]
 Sheet: 2 of 2