

#### TRACT A

BEGINNING AT THE NORTHWEST SECTION CORNER OF SECTION 26; THENCE, SOUTH 00°53'19" WEST ALONG THE WEST LINE OF SAID SECTION 26 A DISTANCE OF 798.28 FEET; THENCE, NORTH 89°56'12" EAST A DISTANCE OF 401.43 FEET; THENCE, NORTH 07°10'07" EAST A DISTANCE OF 110.30 FEET; THENCE, SOUTH 89°31'14" EAST A DISTANCE OF 788.75 FEET; THENCE, NORTH 00°28'46" EAST A DISTANCE OF 692.55 FEET TO A POINT ALONG THE NORTH LINE OF SAID SECTION 26; THENCE, NORTH 89°53'10" WEST ALONG SAID NORTH LINE A DISTANCE OF 1197.34 FEET TO THE END OF THIS DESCRIPTION.

CONTAINING 20.01 ACRES MORE OR LESS

#### TRACT B

COMMENCING AT THE NORTHWEST SECTION CORNER OF SECTION 26; THENCE, SOUTH 89°53'10" EAST ALONG THE NORTH LINE OF SECTION 26 A DISTANCE OF 1197.34 FEET; THENCE, SOUTH 00°28'46" WEST A DISTANCE OF 692.55 FEET TO THE TRUE POINT OF BEGINNING OF THIS DESCRIPTION; THENCE, NORTH 89°31'14" WEST A DISTANCE OF 788.75 FEET; THENCE, SOUTH 07°10'07" WEST A DISTANCE OF 110.30 FEET; THENCE, SOUTH 06°08'55" WEST A DISTANCE OF 721.08 FEET; THENCE, SOUTH 16°03'21" WEST A DISTANCE OF 304.48 FEET; THENCE, SOUTH 47°46'25" EAST A DISTANCE OF 262.64 FEET; THENCE, SOUTH 30°00'17" EAST A DISTANCE OF 213.21 FEET; THENCE, SOUTH 86°53'44" EAST A DISTANCE OF 131.44 FEET; THENCE, SOUTH 62°07'18" EAST A DISTANCE OF 104.30 FEET; THENCE, NORTH 00°41'03" EAST A DISTANCE OF 888.52 FEET; THENCE, SOUTH 89°57'05" EAST A DISTANCE OF 423.44 FEET; THENCE, NORTH 00°28'46" EAST A DISTANCE OF 641.32 FEET.

CONTAINING 20.27 ACRES MORE OR LESS

#### TRACT C

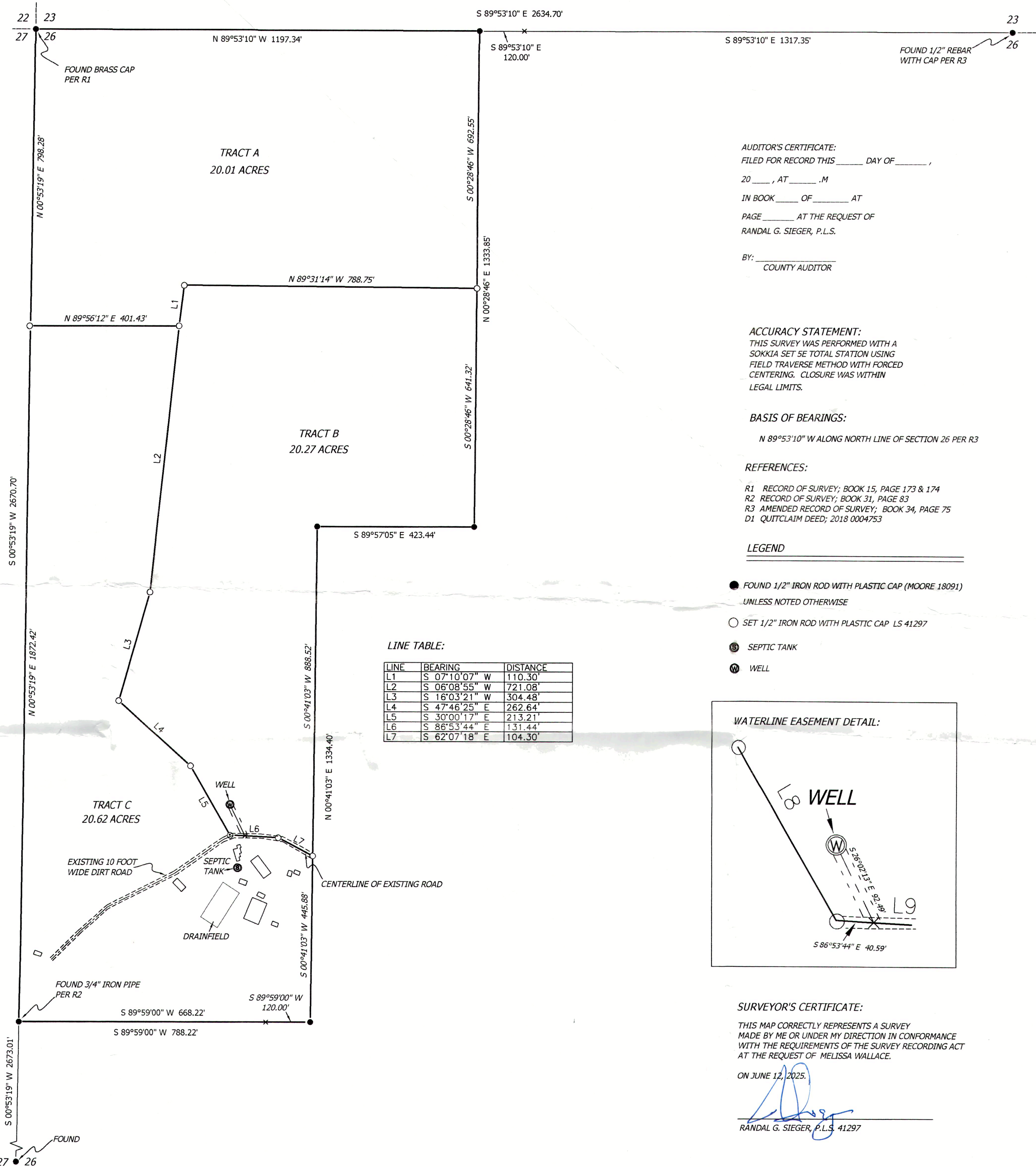
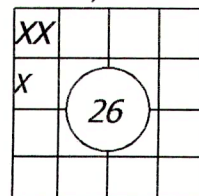
COMMENCING AT THE NORTHWEST SECTION CORNER OF SECTION 26; THENCE, SOUTH 00°53'19" WEST ALONG THE WEST LINE OF SAID SECTION 26 A DISTANCE OF 798.28 FEET TO THE TRUE POINT OF BEGINNING OF THIS DESCRIPTION; THENCE, NORTH 89°56'12" EAST A DISTANCE OF 401.43 FEET; THENCE, SOUTH 06°08'55" WEST A DISTANCE OF 721.08 FEET; THENCE, SOUTH 16°03'21" WEST A DISTANCE OF 304.48 FEET; THENCE, SOUTH 47°46'25" EAST A DISTANCE OF 262.64 FEET; THENCE, SOUTH 30°00'17" EAST A DISTANCE OF 213.21 FEET; THENCE, SOUTH 86°53'44" EAST A DISTANCE OF 131.44 FEET; THENCE, SOUTH 62°07'18" EAST A DISTANCE OF 104.30 FEET; THENCE, THENCE, SOUTH 00°41'03" WEST A DISTANCE OF 445.88 FEET; THENCE, SOUTH 89°59'00" WEST A DISTANCE OF 788.22 FEET TO A POINT ALONG THE WEST LINE OF SAID SECTION 26; THENCE, NORTH 00°53'19" EAST ALONG WEST LINE A DISTANCE OF 1872.42 FEET TO THE TRUE POINT OF BEGINNING AND END OF THIS DESCRIPTION.

CONTAINING 20.62 ACRES MORE OR LESS

#### WATERLINE EASEMENT:

A 15' WIDE WATERLINE EASEMENT BETWEEN TRACT B AND TRACT C, LYING 7.5' EITHER SIDE OF THE FOLLOWING DESCRIBED LINE. COMMENCING AT THE NORTHWEST SECTION CORNER OF SECTION 26; THENCE, SOUTH 00°53'19" WEST ALONG THE WEST LINE OF SAID SECTION 26 A DISTANCE OF 798.28 FEET; THENCE, NORTH 89°56'12" EAST A DISTANCE OF 401.43 FEET; THENCE, SOUTH 06°08'55" WEST A DISTANCE OF 721.08 FEET; THENCE, SOUTH 16°03'21" WEST A DISTANCE OF 304.48 FEET; THENCE, SOUTH 47°46'25" EAST A DISTANCE OF 262.64 FEET; THENCE, SOUTH 30°00'17" EAST A DISTANCE OF 213.21 FEET; THENCE, SOUTH 86°53'44" EAST A DISTANCE OF 131.44 FEET; THENCE, SOUTH 62°07'18" EAST A DISTANCE OF 104.30 FEET; THENCE, NORTH 00°41'03" WEST A DISTANCE OF 445.88 FEET; THENCE, SOUTH 89°59'00" WEST A DISTANCE OF 788.22 FEET TO THE POINT OF BEGINNING OF THIS WATERLINE EASEMENT DESCRIPTION, THENCE, NORTH 26°02'13" WEST A DISTANCE OF 92.49 FEET, TO THE END OF THE EASEMENT DESCRIPTION.

30N, 41E



#### LINE TABLE:

LINE	BEARING	DISTANCE
L1	S 07°10'07" W	110.30'
L2	S 06°08'55" W	721.08'
L3	S 16°03'21" W	304.48'
L4	S 47°46'25" E	262.64'
L5	S 30°00'17" E	213.21'
L6	S 86°53'44" E	131.44'
L7	S 62°07'18" E	104.30'

#### AUDITOR'S CERTIFICATE:

FILED FOR RECORD THIS \_\_\_\_\_ DAY OF \_\_\_\_\_,  
20\_\_\_\_, AT \_\_\_\_\_, M.  
IN BOOK \_\_\_\_\_ OF \_\_\_\_\_ AT  
PAGE \_\_\_\_\_ AT THE REQUEST OF  
RANDAL G. SIEGER, P.L.S.

BY: \_\_\_\_\_  
COUNTY AUDITOR

#### ACCURACY STATEMENT:

THIS SURVEY WAS PERFORMED WITH A  
SOKKIA SET 5E TOTAL STATION USING  
FIELD TRAVERSE METHOD WITH FORCED  
CENTERING. CLOSURE WAS WITHIN  
LEGAL LIMITS.

#### BASIS OF BEARINGS:

N 89°53'10" W ALONG NORTH LINE OF SECTION 26 PER R3

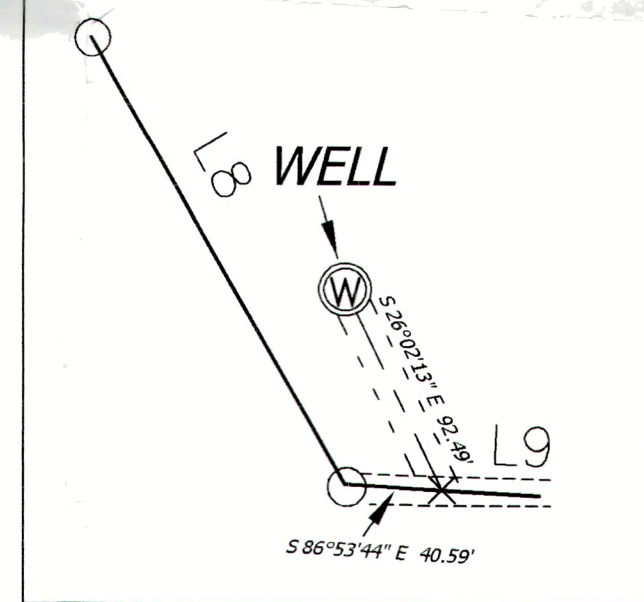
#### REFERENCES:

R1 RECORD OF SURVEY; BOOK 15, PAGE 173 & 174  
R2 RECORD OF SURVEY; BOOK 31, PAGE 83  
R3 AMENDED RECORD OF SURVEY; BOOK 34, PAGE 75  
D1 QUITCLAIM DEED; 2018 0004753

#### LEGEND

- FOUND 1/2" IRON ROD WITH PLASTIC CAP (MOORE 18091)  
UNLESS NOTED OTHERWISE
- SET 1/2" IRON ROD WITH PLASTIC CAP LS 41297
- ⊙ SEPTIC TANK
- ⊙ WELL

#### WATERLINE EASEMENT DETAIL:



#### SURVEYOR'S CERTIFICATE:

THIS MAP CORRECTLY REPRESENTS A SURVEY  
MADE BY ME OR UNDER MY DIRECTION IN CONFORMANCE  
WITH THE REQUIREMENTS OF THE SURVEY RECORDING ACT  
AT THE REQUEST OF MELISSA WALLACE.

ON JUNE 12, 2025.

RANDAL G. SIEGER, P.L.S. 41297

SHEET  
1

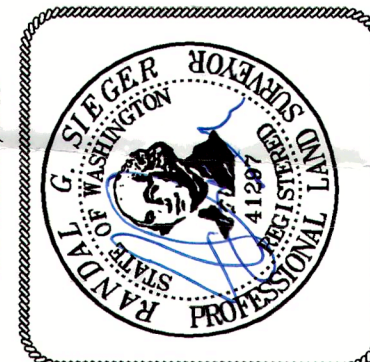
OF  
1

RANDAL SIEGER  
PROFESSIONAL LAND SURVEYOR  
P.O. BOX 121  
SPRINGDALE, WA. 99173  
PHONE: 1-509-385-5155

DATE: SEPTEMBER 2, 2025  
SCALE: 1" = 200'  
REVIEWED BY: R.G.S.  
DRAWN BY: R.G.S.  
PROJECT NO.: 25-010  
DWG.: 25-010

PREPARED FOR:  
MELISSA  
WALLACE

SEPTEMBER 2, 2025



RECORD OF SURVEY

LOCATED IN THE NW 1/4, OF SECTION 26, TOWNSHIP  
30 NORTH, RANGE 41 EAST, WILLAMETTE MERIDIAN  
STEVENS COUNTY, WASHINGTON