

Auditor File #: 2015 0008855

Recorded at the request of:

RFK LAND SURVEYING INC

on 11/25/2015 at 10:48

Total of 3 page(s) Paid: \$ 157.00
STEVENS COUNTY, WASHINGTON

TIM GRAY, AUDITOR

FCLINTON

SURVEY

OWNERS: HANCOCK FOREST MANAGEMENT

TO SURVEY

FILED BY RFK LAND SURVEYING INC

SURVEYOR RUDY F. KITZAN

SURVEY BOOK 35

PAGE(S) 167, 168 & 169

LEGAL DESCRIPTION:

SECTION 30	TWP 32	RGE 40
SECTION 31	TWP 32	RGE 40
SECTION	TWP	RGE
SECTION	TWP	RGE
SECTION	TWP	RGE
SECTION	TWP	RGE

**ADDITIONAL INFORMATION: PORTION SW1/4 & SE1/4 SECTION 30
PORTION NE1/4, NW1/4 & SE1/4 SECTION 31**

T-25
30
25
31

N 03°15'07" W
2632.09'

(SEE SURVEYOR'S NOTE 3)

(GLO 40 CHAINS)

(SEE SURVEYOR'S NOTE 2)

(GLO 40 CHAINS)

(GLO 40 CHAINS)

(GLO 40 CHAINS)

(GLO 40 CHAINS)

(GLO 40 CHAINS)

(GLO 40 CHAINS)

(GLO 40 CHAINS)

(GLO 40 CHAINS)

(GLO 40 CHAINS)

(GLO 40 CHAINS)

(GLO 40 CHAINS)

(GLO 40 CHAINS)

(GLO 40 CHAINS)

(GLO 40 CHAINS)

(GLO 40 CHAINS)

(GLO 40 CHAINS)

(GLO 40 CHAINS)

(GLO 40 CHAINS)

T-30
30
29

S 03°18'24" E
1354.50'

S 03°18'24" E
1293.00'

S 03°18'24" E
1343.16'

S 03°18'24" E
1316.21'

S 03°18'24" E
1329.16'

S 03°18'24" E
1329.16'

S 03°18'24" E
1324.57'

S 03°18'24" E
1324.57'

S 03°18'24" E
1324.57'

S 03°18'24" E
1324.57'

S 03°18'24" E
1324.57'

S 03°18'24" E
1324.57'

S 03°18'24" E
1324.57'

S 03°18'24" E
1324.57'

S 03°18'24" E
1324.57'

S 03°18'24" E
1324.57'

S 03°18'24" E
1324.57'

S 03°18'24" E
1324.57'

S 03°18'24" E
1324.57'

S 03°18'24" E
1324.57'

S 03°18'24" E
1324.57'

S 03°18'24" E
1324.57'

T-31
31
30

N 03°15'03" W
1315.91'

N 87°03'45" E
1348.20'

N 87°03'45" E
1348.20'

N 87°03'45" E
1348.20'

N 87°03'45" E
1348.20'

N 87°03'45" E
1348.20'

N 87°03'45" E
1348.20'

N 87°03'45" E
1348.20'

N 87°03'45" E
1348.20'

N 87°03'45" E
1348.20'

N 87°03'45" E
1348.20'

N 87°03'45" E
1348.20'

N 87°03'45" E
1348.20'

N 87°03'45" E
1348.20'

N 87°03'45" E
1348.20'

N 87°03'45" E
1348.20'

N 87°03'45" E
1348.20'

N 87°03'45" E
1348.20'

N 87°03'45" E
1348.20'

N 87°03'45" E
1348.20'

N 87°03'45" E
1348.20'

N 87°03'45" E
1348.20'

T-32
32
31

N 02°21'42" W
1319.93'

N 87°35'55" E
658.97'

N 87°35'55" E
658.97'

N 87°35'55" E
658.97'

N 87°35'55" E
658.97'

N 87°35'55" E
658.97'

N 87°35'55" E
658.97'

N 87°35'55" E
658.97'

N 87°35'55" E
658.97'

N 87°35'55" E
658.97'

N 87°35'55" E
658.97'

N 87°35'55" E
658.97'

N 87°35'55" E
658.97'

N 87°35'55" E
658.97'

N 87°35'55" E
658.97'

N 87°35'55" E
658.97'

N 87°35'55" E
658.97'

N 87°35'55" E
658.97'

N 87°35'55" E
658.97'

N 87°35'55" E
658.97'

N 87°35'55" E
658.97'

N 87°35'55" E
658.97'

T-33
33
32

N 02°20'36" W
1327.67'

N 02°20'36" W
1327.67'

N 02°20'36" W
1327.67'

N 02°20'36" W
1327.67'

N 02°20'36" W
1327.67'

N 02°20'36" W
1327.67'

N 02°20'36" W
1327.67'

N 02°20'36" W
1327.67'

N 02°20'36" W
1327.67'

N 02°20'36" W
1327.67'

N 02°20'36" W
1327.67'

N 02°20'36" W
1327.67'

N 02°20'36" W
1327.67'

N 02°20'36" W
1327.67'

N 02°20'36" W
1327.67'

N 02°20'36" W
1327.67'

N 02°20'36" W
1327.67'

N 02°20'36" W
1327.67'

N 02°20'36" W
1327.67'

N 02°20'36" W
1327.67'

N 02°20'36" W
1327.67'

N 02°20'36" W
1327.67'

T-34
34
33

N 02°20'03" E
1323.02'

N 02°20'03" E
1323.02'

N 02°20'03" E
1323.02'

N 02°20'03" E
1323.02'

N 02°20'03" E
1323.02'

N 02°20'03" E
1323.02'

N 02°20'03" E
1323.02'

N 02°20'03" E
1323.02'

N 02°20'03" E
1323.02'

N 02°20'03" E
1323.02'

N 02°20'03" E
1323.02'

N 02°20'03" E
1323.02'

N 02°20'03" E
1323.02'

N 02°20'03" E
1323.02'

N 02°20'03" E
1323.02'

N 02°20'03" E
1323.02'

N 02°20'03" E
1323.02'

N 02°20'03" E
1323.02'

N 02°20'03" E
1323.02'

N 02°20'03" E
1323.02'

N 02°20'03" E
1323.02'

N 02°20'03" E
1323.02'

T-35
35
34

N 02°20'14" E
1324.57'

N 02°20'14" E
1324.57'

N 02°20'14" E
1324.57'

N 02°20'14" E
1324.57'

N 02°20'14" E
1324.57'

N 02°20'14" E
1324.57'

N 02°20'14" E
1324.57'

N 02°20'14" E
1324.57'

N 02°20'14" E
1324.57'

N 02°20'14" E
1324.57'

N 02°20'14" E
1324.57'

N 02°20'14" E
1324.57'

N 02°20'14" E
1324.57'

N 02°20'14" E
1324.57'

N 02°20'14" E
1324.57'

N 02°20'14" E
1324.57'

N 02°20'14" E
1324.57'

N 02°20'14" E
1324.57'

N 02°20'14" E
1324.57'

N 02°20'14" E
1324.57'

N 02°20'14" E
1324.57'

N 02°20'14" E
1324.57'

T-36
36
35

N 02°48'41" E
2633.46'

N 02°48'41" E
2633.46'

N 02°48'41" E
2633.46'

N 02°48'41" E
2633.46'

N 02°48'41" E
2633.46'

N 02°48'41" E
2633.46'

N 02°48'41" E
2633.46'

N 02°48'41" E
2633.46'

N 02°48'41" E
2633.46'

N 02°48'41" E
2633.46'

N 02°48'41" E
2633.46'

N 02°48'41" E
2633.46'

N 02°48'41" E
2633.46'

N 02°48'41" E
2633.46'

N 02°48'41" E
2633.46'

N 02°48'41" E
2633.46'

N 02°48'41" E
2633.46'

N 02°48'41" E
2633.46'

N 02°48'41" E
2633.46'

N 02°48'41" E
2633.46'

N 02°48'41" E
2633.46'

N 02°48'41" E
2633.46'

T-37
37
36

N 02°28'05" W
2634.39'

N 02°28'05" W
2634.39'

N 02°28'05" W
2634.39'

N 02°28'05" W
2634.39'

N 02°28'05" W
2634.39'

N 02°28'05" W
2634.39'

N 02°28'05" W
2634.39'

N 02°28'05" W
2634.39'

N 02°28'05" W
2634.39'

N 02°28'05" W
2634.39'

N 02°28'05" W
2634.39'

N 02°28'05" W
2634.39'

N 02°28'05" W
2634.39'

N 02°28'05" W
2634.39'

N 02°28'05" W
2634.39'

N 02°28'05" W
2634.39'

N 02°28'05" W
2634.39'

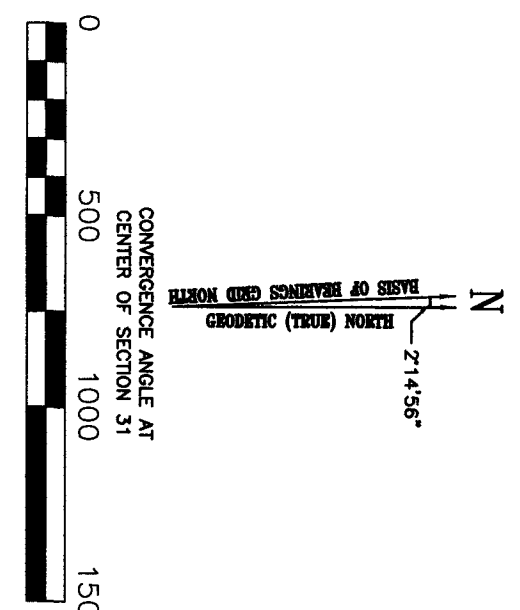
N 02°28'05" W
2634.39'

N 02°28'05" W
2634.39'

N 02°28'05" W
2634.39'

N 02°28'05" W
2634.39'

N 02°28'05" W
2634.39'



CONVERGENCE ANGLE AT CENTER OF SECTION 31
1" = 500 FEET

- LEGEND**
- FOUND MONUMENT AS NOTED
 - ⊙ SET 30" LONG ALUMINUM BREAKAWAY PIPE MONUMENT WITH A CORNER STRIPPED WITH THE BULL IDENTIFICATION.
 - ⊠ QUARTER CORNER AS NOTED
 - ⊡ SECTION CORNER AS NOTED
 - Ⓧ REFERENCES SHEET 2

EQUIPMENT AND PROCEDURES
THIS SURVEY WAS PERFORMED WITH A SOKKIA GSR2700 ISX GPS DUAL FREQUENCY RECEIVERS. THE METHOD WAS RTK APPLYING A PROJECT COMBINED SCALE FACTOR OF 1.00012989. BEARINGS SHOWN ARE WASHINGTON STATE PLANE NORTH ZONE NAD 83 GRID BEARINGS AND DISTANCES SHOWN ARE GROUND. THE GEOD MODEL WERE 99.

REFERENCES
RECORD OF SURVEY BOOK 24, PAGE 94.
NO. 20040009646
RECORD OF SURVEY BOOK 26, PAGE 144.
NO. 20060013649
SHORT PLAT NO. SP 13-2009 F--141.
NO. 20090009666
SHORT PLAT NO. SP 15-2009 F--124.
NO. 20090007076
RECORD OF SURVEY BOOK 34, PAGE 38.
NO. 20140001311

LINE TABLE

LINE	BEARING	DISTANCE
L1	N 77°04'35" W	157.46'
L2	N 12°55'25" E	233.31'
L3	N 12°55'25" E	73.41'

SURVEYOR'S CERTIFICATE
THIS MAP CORRECTLY REPRESENTS A SURVEY MADE BY ME OR UNDER MY DIRECTION IN CONFORMANCE WITH THE REQUIREMENTS OF THE SURVEY RECORDING ACT AT THE REQUEST OF HANCOCK FOREST MANAGEMENT IN APRIL - OCTOBER, 2015.

CORNER NOTES:

[T-25] CORNER NOT VISITED THIS SURVEY. CORNER WAS CALCULATED FROM DOE UP SO SURVEY BY GLAHE AND ASSOCIATES DATED 2-26-14 IN BOOK 34 OF SURVEYS AT PAGE 38 RECORDING NO. 20140001311. I USED THIS CORNER TO EVALUATE THE FOUND RAIL MONUMENTS IN THE INTERIOR OF SECTION 30.

[S-3] FOUND A RAIL MONUMENT IN A MOUND OF STONE APPROXIMATELY 10 INCHES ABOVE GROUND AS DEFINED IN THE 1928 DEPENDENT RESURVEY OF THE COLVILLE GUIDE MERIDIAN. THESE MONUMENTS WERE SET BY A PRIVATE SURVEYOR OF WHICH I WAS UNABLE TO FIND ANY RECORD. THESE MONUMENTS ARE BEING RECOGNIZED AND ACCEPTED BY THE ADJOINING LAND OWNERS. (SEE SURVEYOR'S NOTE 1.)

[T-3] APPROXIMATELY 10 INCHES ABOVE GROUND OF STONE IN THE 1928 DEPENDENT RESURVEY OF THE COLVILLE GUIDE MERIDIAN. THESE MONUMENTS WERE SET BY A PRIVATE SURVEYOR OF WHICH I WAS UNABLE TO FIND ANY RECORD. THESE MONUMENTS ARE BEING RECOGNIZED AND ACCEPTED BY THE ADJOINING LAND OWNERS. (SEE SURVEYOR'S NOTE 1.)

[U-3] FOUND A RAIL MONUMENT IN A MOUND OF STONE APPROXIMATELY 10 INCHES ABOVE GROUND AS DEFINED IN THE 1928 DEPENDENT RESURVEY OF THE COLVILLE GUIDE MERIDIAN. THESE MONUMENTS WERE SET BY A PRIVATE SURVEYOR OF WHICH I WAS UNABLE TO FIND ANY RECORD. THESE MONUMENTS ARE BEING RECOGNIZED AND ACCEPTED BY THE ADJOINING LAND OWNERS. (SEE SURVEYOR'S NOTE 1.)

[T-5] CORNER NOT VISITED THIS SURVEY. CORNER WAS CALCULATED FROM SHORT PLAT NO. SP 15-2009 BY THOMAS LAND SURVEYS RECORDED IN VOLUME F, PAGE 124 RECORDING NO. 20090007078. I USED THIS CORNER TO EVALUATE THE FOUND RAIL MONUMENTS IN THE INTERIOR OF SECTION 30.

[V-1] FOUND 3-1/4" ALUMINUM CAP WITNESS CORNER MONUMENT FROM DOE UP SO SURVEY BY GLAHE AND ASSOCIATES DATED 2-26-14 IN BOOK 34 OF SURVEYS AT PAGE 38 RECORDING NO. 20140001311. I ACCEPTED THIS CORNER. (SEE SURVEYOR'S NOTE 3.)

[V-3] CORNER WAS ORIGINALLY ESTABLISHED BY JAMES K. HULL IN OCTOBER- NOVEMBER 1883 WHO SET A POST 3-1/2 FEET LONG, 3 INCHES SQUARE, 12 INCHES IN THE GROUND MARKED 1/4 S ON NORTH FACE FROM WHICH A PINE 40" IN DIAMETER BEARS N12W, 38 LINKS MARKED 1/4 S BT. A PINE 40" IN DIAMETER BEARS S 78E, 79 LINKS MARKED 1/4 S BT.

[V-4] I FOUND NO EVIDENCE OF THE ORIGINAL MONUMENT OR BEARING TREES. I RE-ESTABLISHED THIS CORNER USING THE FOUND RAIL MONUMENTS WITHIN SECTIONS 30 AND 31. AT A POINT ON LINE WITH THESE MONUMENTS AND A POINT ON LINE FROM THE E 1/16 OF SECTION 31 AND THE NORTHWEST CORNER OF SECTION 31 AS RE-ESTABLISHED BY THE DOE UP SO SURVEY BY GLAHE AND ASSOCIATES DATED 2-26-14 IN BOOK 34 OF SURVEYS AT PAGE 38. AT THIS INTERSECTION I SET A 30" LONG ALUMINUM BREAKAWAY MONUMENT WITH A 3" CAP STAMPED WITH THE BLM CORNER DESIGNATION FROM WHICH I SET THE FOLLOWING REFERENCES:
8" PINE BEARING TREE TAG READS N 42° W, 54.25'.
8" PINE BEARING TREE TAG READS S 12° E, 77.35'.
(SEE SURVEYOR'S NOTE 2)

[V-5] FOUND MONUMENT PER SHORT PLAT NO. SP 15-2009 BY THOMAS LAND SURVEYS RECORDED IN VOLUME F, PAGE 124 RECORDING NO. 20090007078.

[GENW 1/64] SET A 30" LONG ALUMINUM BREAKAWAY MONUMENT WITH A 3" CAP STAMPED WITH THE CORNER DESIGNATION. SET THE FOLLOWING REFERENCES:
26" FIR WITH SCRIBING AND BEARING TREE TAG READS S 20° W, 22.95'.
15" FIR WITH SCRIBING AND BEARING TREE TAG READS S 80° W, 9.67'.

[W-3] SET A 30" LONG ALUMINUM BREAKAWAY MONUMENT WITH A 3" CAP STAMPED WITH THE CORNER DESIGNATION. SET THE FOLLOWING REFERENCES:
15" FIR WITH SCRIBING AND BEARING TREE TAG READS N 52° E, 16.15'.
10" FIR WITH SCRIBING AND BEARING TREE TAG READS S 80° W, 6.25'.

[U] SET A 30" LONG ALUMINUM BREAKAWAY MONUMENT WITH A 3" CAP STAMPED WITH THE CORNER DESIGNATION AT THE INTERSECTION OF THE EAST LINE OF THE STAR LODGE MINE WITH THE NORTH LINE OF SECTION 31 AT THE RECORD DISTANCE OF THE STAR LODGE ADJUSTED SLIGHTLY. SET THE FOLLOWING REFERENCES:
10" FIR WITH SCRIBING AND BEARING TREE TAG READS N 17° W, 16.34'.
17" FIR WITH SCRIBING AND BEARING TREE TAG READS EAST, 24.3'.

[U] SET A 30" LONG ALUMINUM BREAKAWAY MONUMENT WITH A 3" CAP STAMPED WITH THE CORNER DESIGNATION AT THE INTERSECTION OF THE WEST LINE OF THE EAST HALF OF GOVERNMENT LOT 5 WITH THE SOUTH LINE OF THE STAR LODGE MINE. SET THE FOLLOWING REFERENCES:
15" FIR WITH SCRIBING AND BEARING TREE TAG READS N 10° W, 23.25'.
15" FIR WITH SCRIBING AND BEARING TREE TAG READS S 40° E, 31.50'.

[U] CORNER 1 OF THE STAR LODGE MINERAL SURVEY NO. 549, DATED JANUARY 1, 1893 FIELD NOTES DATED NOVEMBER 20TH 1899.
ORIGINAL CORNER WAS A TAMARACK STAKE 4" SQUARE AND 4" LONG, 18" IN THE GROUND SCRIBED 1-549 FROM WHICH AN 8" DIAMETER TAMARACK SCRIBED BT 1/549 BEARS N56°30'W, 39' AND A TAMARACK 20 INCHES IN DIAMETER SCRIBED BT 1/549 BEARS N9°20'E, 14'.
NOTHING FOUND AT THE INTERSECTION OF THE 2 DISTANCE TIES TO THE NORTHEAST CORNER OF SECTION 31. I SET A 30" LONG ALUMINUM BREAKAWAY MONUMENT WITH A 3" CAP STAMPED CORNER NO. 1 STAR. SET THE FOLLOWING REFERENCES:
12" FIR WITH SCRIBING AND BEARING TREE TAG READS S, 21.45'.
20" FIR WITH SCRIBING AND BEARING TREE TAG READS N 70° W, 25.30'.

[U] CORNER 2 OF THE STAR LODGE MINERAL SURVEY NO. 549, DATED JANUARY 1, 1893 FIELD NOTES DATED NOVEMBER 20TH 1899.
ORIGINAL CORNER WAS A PINE STAKE 4" SQUARE AND 4-1/2" LONG, 18" IN THE GROUND SCRIBED 2-549 FROM WHICH A 30" DIAMETER YELLOW PINE SCRIBED BT 2/549 BEARS N73°50'E, 24' AND A YELLOW PINE 30 INCHES IN DIAMETER SCRIBED BT 2/549 BEARS N30°40'W, 77'.
NOTHING FOUND OR SET. WE LOCATED BOTH THE VERTICAL SHALT AND THE 43' SHALT AS MENTIONED IN THE NOTES. BOTH OF THESE TIES WERE APPROXIMATELY 20 FEET LONGER THAN REPORTED IN THE NOTES.

[GEN 1/64] SET A 30" LONG ALUMINUM BREAKAWAY MONUMENT WITH A 3" CAP STAMPED WITH THE CORNER DESIGNATION. SET THE FOLLOWING REFERENCES:
18" FIR WITH SCRIBING AND BEARING TREE TAG READS S 30° W, 50.40'.
24" FIR WITH SCRIBING AND BEARING TREE TAG READS S 74° W, 47.25'.
[SWNE 1/64] SET A 30" LONG ALUMINUM BREAKAWAY MONUMENT WITH A 3" CAP STAMPED WITH THE CORNER DESIGNATION. SET THE FOLLOWING REFERENCES:
18" FIR WITH SCRIBING AND BEARING TREE TAG READS N 70° E, 46.40'.
18" FIR WITH SCRIBING AND BEARING TREE TAG READS N 20° W, 6.74'.

[X-1] GLO 1928 DEPENDENT RESURVEY FOUND A RAIL ROAD RAIL AT THIS CORNER AND MONUMENTED THE CORNER WITH A 3" LONG 1" DIAMETER 27" IN THE GROUND WITH A BRASS CAP BEARING THE CORNER DESIGNATION.
IN JUNE-JULY 2004 THOMAS E. TODD FOUND AND ACCEPTED THE BRASS CAP IN BOOK 24, PAGE 94 RECORDING NO. 20040009646.
I FOUND AND ACCEPT THE BRASS CAP AS THE 1/4 COMMON TO SECTIONS 31 AND 36.

[GEN 1/64] SET A 30" LONG ALUMINUM BREAKAWAY MONUMENT WITH A 3" CAP STAMPED WITH THE CORNER DESIGNATION. SET THE FOLLOWING REFERENCES:
20" FIR WITH SCRIBING AND BEARING TREE TAG READS S 17° E, 27.80'.
15" FIR WITH SCRIBING AND BEARING TREE TAG READS S 27° W, 39.0'.

[X-3] FOUND A RAIL MONUMENT IN A MOUND OF STONE APPROXIMATELY 10 INCHES ABOVE GROUND AS DEFINED IN THE 1928 DEPENDENT RESURVEY OF THE COLVILLE GUIDE MERIDIAN. THESE MONUMENTS WERE SET BY A PRIVATE SURVEYOR OF WHICH I WAS UNABLE TO FIND ANY RECORD. THESE MONUMENTS ARE BEING RECOGNIZED AND ACCEPTED BY THE ADJOINING LAND OWNERS. (SEE SURVEYOR'S NOTE 1.) FROM THIS MONUMENT I SET THE FOLLOWING REFERENCES:
14" FIR WITH SCRIBING AND BEARING TREE TAG READS S 30° E, 18.70'.
12" FIR WITH SCRIBING AND BEARING TREE TAG READS N 50° W, 4.80'.

[ONE 1/64] SET A 30" LONG ALUMINUM BREAKAWAY MONUMENT WITH A 3" CAP STAMPED WITH THE CORNER DESIGNATION. SET THE FOLLOWING REFERENCES:
27" PINE WITH SCRIBING AND BEARING TREE TAG READS S40E, 46.40'.
12" FIR WITH SCRIBING AND BEARING TREE TAG READS S 40° W, 14.95'.
FOUND A 5/8" REBAR AND 1-1/2" ALUMINUM CAP THOMAS E. TODD PER RECORD OF SURVEY BOOK 24, PAGE 94 RECORDING NO. 20040009646 DATED JUNE-JULY 2004, N 86°44'33" W, 9.25'.

[X-4] SET A 30" LONG ALUMINUM BREAKAWAY MONUMENT WITH A 3" CAP STAMPED WITH THE CORNER DESIGNATION. SET THE FOLLOWING REFERENCES:
8" FIR WITH SCRIBING AND BEARING TREE TAG READS N, 26.35'.
18" FIR WITH SCRIBING AND BEARING TREE TAG READS W, 3.45'.
FOUND A 5/8" REBAR AND 1-1/2" ALUMINUM CAP THOMAS E. TODD PER RECORD OF SURVEY BOOK 24, PAGE 94 RECORDING NO. 20040009646 DATED JUNE-JULY 2004, N 87°41'51" W, 6.10'.

[GEN 1/64] SET A 30" LONG ALUMINUM BREAKAWAY MONUMENT WITH A 3" CAP STAMPED WITH THE CORNER DESIGNATION. SET THE FOLLOWING REFERENCES:
18" FIR WITH SCRIBING AND BEARING TREE TAG READS N, 7.40'.
18" FIR WITH SCRIBING AND BEARING TREE TAG READS S 6° E, 17.38'.

[X-5] FOUND MONUMENT AND REFERENCES PER RECORD OF SURVEY BY RPK LAND SURVEYING INC. DATED NOVEMBER 7TH 2006 IN BOOK 26, PAGE 144 RECORDING NO. 20060013649.
[Y-4] SET A 30" LONG ALUMINUM BREAKAWAY MONUMENT WITH A 3" CAP STAMPED WITH THE CORNER DESIGNATION. SET THE FOLLOWING REFERENCES:
15" FIR WITH SCRIBING AND BEARING TREE TAG READS S 6.85'.
9" FIR WITH SCRIBING AND BEARING TREE TAG READS S8°W, 19.77'.
FOUND A 5/8" REBAR AND 1-1/2" ALUMINUM CAP THOMAS E. TODD PER RECORD OF SURVEY BOOK 24, PAGE 94 RECORDING NO. 20040009646 DATED JUNE-JULY 2004, S 89°57'03" W, 3.08'.
[Y-5] SET A 30" LONG ALUMINUM BREAKAWAY MONUMENT WITH A 3" CAP STAMPED WITH THE CORNER DESIGNATION. SET THE FOLLOWING REFERENCES:
13" FIR WITH SCRIBING AND BEARING TREE TAG READS S 20° W, 23.15'.
9" FIR WITH SCRIBING AND BEARING TREE TAG READS N 58° E, 36.2'.

[GENE 1/64] SET A 30" LONG ALUMINUM BREAKAWAY MONUMENT WITH A 3" CAP STAMPED WITH THE CORNER DESIGNATION. SET THE FOLLOWING REFERENCES:
12" PINE WITH SCRIBING AND BEARING TREE TAG READS S 70°W, 20.50'.
14" PINE WITH SCRIBING AND BEARING TREE TAG READS S, 46.77'.
[Z-1] GLO 1928 DEPENDENT RESURVEY FOUND A GRANITE STONE WITH A +, 8"x6"-6" IN THE GROUND WITH 6 GROOVES ON N, E, S, AND W FACES. THEY RE-MONUMENTED THE CORNER WITH AN IRON POST 3" LONG 3" IN DIAMETER 27" IN THE GROUND WITH A BRASS CAP BEARING THE CORNER DESIGNATION.
ON FEBRUARY 24TH THOMAS K. CARLSON FOUND AND ACCEPTED THE BRASS CAP IN BOOK 3, PAGE 17 RECORDING NO. 504477.
THOMAS E. TODD FOUND AND ACCEPTED THE BRASS CAP ON THE FOLLOWING SURVEYS:
AUGUST 24TH 2004-RECORDING NO. 20040009646.
JUNE 12TH 2002-RECORDING NO. 20020006697.
AUGUST 5TH 1996-RECORDING NO. 9609002.
I FOUND AND ACCEPT THE BRASS CAP AS THE CORNER COMMON TO TOWNSHIPS 31 AND 32 NORTH, RANGES 39 AND 40 EAST.

[Z-3] CORNER WAS ORIGINALLY ESTABLISHED BY JAMES K. HULL IN OCTOBER- NOVEMBER 1883 WHO SET A POST 4" LONG 3" SQUARE, 12" IN THE GROUND MARKED 1/4 S ON NORTH FACE FROM WHICH A PINE 10" IN DIAMETER BEARS S41E, 22 LINKS MARKED 1/4 S BT. A FIR 14" IN DIAMETER BEARS N0°W, 14 LINKS MARKED 1/4 S BT.
THOMAS K. CARLSON ON FEBRUARY 24TH 1981 RECORDING NO. 504477 NOTES THE CORNER AS LOST!
THOMAS E. TODD SINGLE PROPORTIONED THE CORNER, BUT DID NOT MONUMENT ON THE FOLLOWING SURVEY:
AUGUST 24TH 2004-RECORDING NO. 20040009646,
I WAS UNABLE TO FIND ANY EVIDENCE OF THE CORNER OR ACCESSORIES; AT A SINGLE PROPORTIONATE POSITION I SET A 30" ALUMINUM MONUMENT WITH A 3" CAP STAMPED WITH THE CORNER DESIGNATION AND SET THE FOLLOWING REFERENCES:
15" FIR BEARING TREE TAG READS S 66° W, 11.12'.
15" PINE BEARING TREE TAG READS N 20° W, 42.42'.

[Z-4] FOUND AND ACCEPTED A 5/8" REBAR WITH A 1-1/2" ALUMINUM CAP BY THOMAS E. TODD SET ON AUGUST 24TH 2004-RECORDING NO. 20040009646, SET THE FOLLOWING REFERENCES:
10" ASPEN WITH SCRIBING AND BEARING TREE TAG READS S, 30.6'.
9" ASPEN WITH SCRIBING AND BEARING TREE TAG READS S 70° W, 11.25'.

[Z-5] CORNER WAS ESTABLISHED BY JAMES K. HULL IN MAY 1883 WHO SET A POST 4" LONG 4" SQUARE, 24" IN THE GROUND MARKED T32N S32 ON NE, R40E S5 ON SE, T31N S6 ON SW, S31 ON NW FACES WITH 1 NOTCH ON W, 5 NOTCHES ON E FACE, A PINE 40" IN DIAMETER N20E, 121 LINKS, A PINE 30" IN DIAMETER S72E, 78 LINKS, A PINE 25" IN DIAMETER S14W, 67 LINKS A PINE 18" IN DIAMETER N10W, 81 LINKS.
THOMAS K. CARLSON ON FEB. 1981 ACCEPTED POSITION OF E-W-S FENCE WHICH HAD PREVIOUSLY BEEN OCCUPIED BY AN IRON PIPE. HE SET A 1/2" X 24" IRON PIPE WITH AN ALUMINUM CAP.
RPK LAND SURVEYING INC. FOUND AND ACCEPTED A 2" ALUMINUM CAP AS SHOWN BY THOMAS E. TODD ON AUGUST 24TH RECORDING NO. 20040009646.
I SET THE FOLLOWING REFERENCES:
15" FIR BEARING TREE TAG READS S 66° W, 11.12'.
15" PINE BEARING TREE TAG READS N 20° W, 42.42'.

RECORD OF SURVEY

FOR HANCOCK FOREST MANAGEMENT

NORSE SURVEY

CONTRACT NO. CV-ML-WA-15-084-FS

LOCATED IN THE NE, NW AND SE 1/4 OF SECTION 31

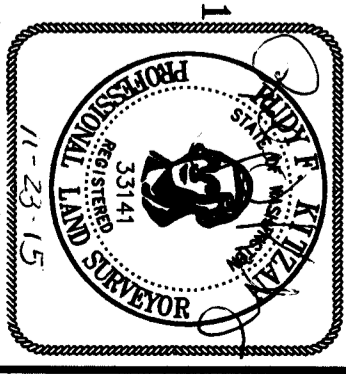
AND NW 1/4 OF SECTION 32

TOWNSHIP 32 NORTH, RANGE 40 EAST, W.M.,

STEVENS COUNTY, WASHINGTON

APRIL-OCTOBER, 2015

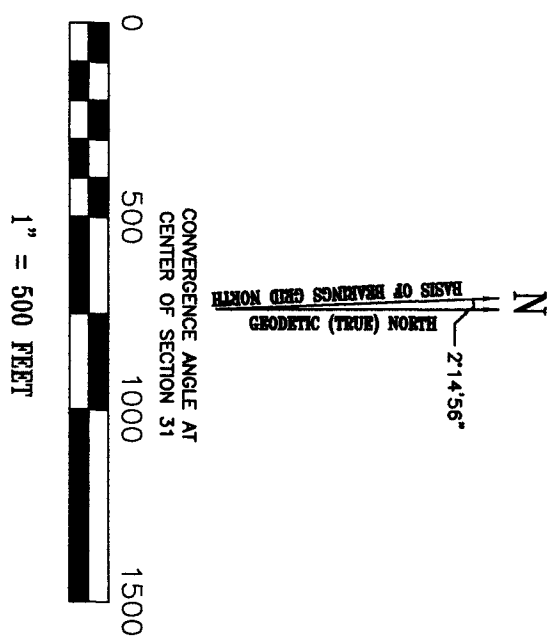
RPK LAND SURVEYING INC.			
1420 WEST GARLAND AVENUE			
STROVANT, WA 99205			
TEL: (509) 524-7861			
FAX: (509) 527-7249			
E-MAIL: brtkrtizan@questoffice.net			
DRAWN	CHECKED	APPROVED	SCALE
RPK	RPK	RPK	1"=500'
DATE	DATE	DATE	SHEET
10/15/16	11/02/16	11/03/16	2 OF 3
			FIELD BOOK
			90



20150008855

STEVENS COUNTY AUDITOR _____

**RECORD OF SURVEY
FOR HANCOCK FOREST MANAGEMENT
NORSE SURVEY
CONTRACT NO. CV-ML-WA-15-084-FS
LOCATED IN THE NW 1/4 OF SECTION 32
TOWNSHIP 32 NORTH, RANGE 40 EAST, W.M.,
STEVENS COUNTY, WASHINGTON
APRIL-OCTOBER, 2015**



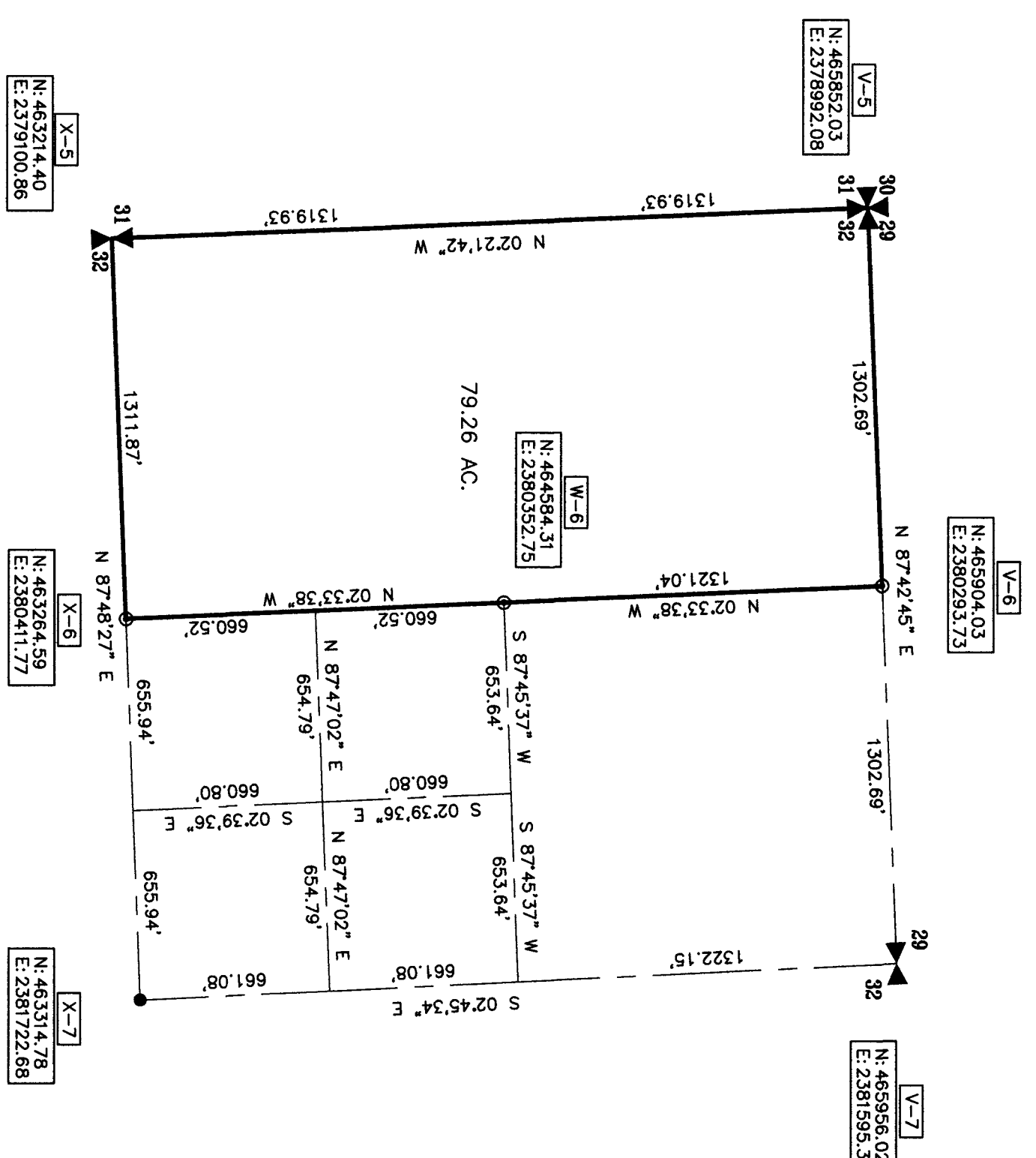
- V-6** SET A 30" LONG ALUMINUM BREAKAWAY MONUMENT WITH A 3" CAP STAMPED WITH THE CORNER DESIGNATION. SET THE FOLLOWING REFERENCES:
10" PINE WITH SCRIBING AND BEARING TREE TAG READS S 70° W, 6.50'.
24" PINE WITH SCRIBING AND BEARING TREE TAG READS S 15° E, 23.08'.
- V-7** NOT VISITED THIS SURVEY. SEE CORNER HISTORY BY THOMAS LAND SURVEYS DATED JULY, 2009 RECORDING NO. 20090007078 PAGE 3 OF 4.
- W-6** SET A 30" LONG ALUMINUM BREAKAWAY MONUMENT WITH A 3" CAP STAMPED WITH THE CORNER DESIGNATION. SET THE FOLLOWING REFERENCES:
20" PINE WITH SCRIBING AND BEARING TREE TAG READS S 12° E, 16.05'.
9" PINE WITH SCRIBING AND BEARING TREE TAG READS N 45° E, 25.95'.
- X-6** SET A 30" LONG ALUMINUM BREAKAWAY MONUMENT WITH A 3" CAP STAMPED WITH THE CORNER DESIGNATION. SET THE FOLLOWING REFERENCES:
12" PINE WITH SCRIBING AND BEARING TREE TAG READS S 30° E, 4.92'.
8" PINE WITH SCRIBING AND BEARING TREE TAG READS S 60° W, 7.72'.
- X-7** NOT VISITED THIS SURVEY. SEE RECORD OF SURVEY BY RPK LAND SURVEYING INC. DATED NOVEMBER 7TH 2006, RECORDING NO. 20060013649.

SURVEYOR'S NOTES

1. RAILROAD RAIL MONUMENTS WE FOUND WERE APPROXIMATELY 6" TO 10" HIGH IN A VERY OLD MOUND OF ROCKS. THESE MONUMENTS WERE MOST LIKELY THE SAME MONUMENTS FOUND IN THE 1928 OLD DEPENDENT RESURVEY OF THE COLVILLE GUIDE MERIDIAN. I BELIEVE THESE MONUMENTS MAY HAVE BEEN SET IN 1915-1916 WHEN THE MAGNISTE MINING TOOK PLACE. THEY APPEAR TO REPRESENT THE BEST EVIDENCE OF THE OBLITERATED SECTION AND QUARTER SECTION CORNERS. LAND OWNERS ARE RECOGNIZING THEM AS THEIR CORNERS.
2. **V-3** I FOUND NO EVIDENCE OF THE ORIGINAL CORNER OR THE BEARING TREES. THE ORIGINAL CORNER WAS A WOOD POST SET IN 1883. THE RAILROAD RAIL MONUMENTS I FOUND IN SECTION 30 AND THE ONE AT THE CENTER OF SECTION 31 WERE MOST LIKELY SET WHEN THIS CORNER EXISTED. I DID NOT ACCEPT THE CS 1/16 OF SECTION 30 AS BEING EQUIDISTANT FROM THE CENTER OF SECTION 30 TO THE 1/4 CORNER OF 30 AND 31. THIS WOULD HAVE ESTABLISHED THE POINT ANOTHER 50 FEET +/- FARTHER NORTH. I DID ACCEPT THE CS 1/16 AS BEING ON A STRAIGHT LINE FROM THE OTHER MONUMENTS I FOUND IN SECTION 30. I SET AN ALUMINUM MONUMENT ON LINE WITH THE RAILROAD RAIL MONUMENTS AT A POINT OF INTERSECTION WITH A FOUND 3/4" STEEL ROD IN AN OLD MOUND OF ROCKS AT THE E 1/16 CORNER (WHICH APPEARS TO BE THE SAME AGE AS THE RAILROAD RAIL MONUMENTS) AND THE LOCATION OF THE SECTION CORNER COMMON TO 25, 36, 30 AND 31 AS RE-ESTABLISHED PER R5.
3. THE ORIGINAL CORNER WAS SET IN 1889 IN THE SURVEY OF THE COLVILLE GUIDE MERIDIAN. IT WAS FOUND BY JAMES K. HULL IN 1883 IN THE SUBDIVISION OF T. 32N, R. 40E. THE 1928 DEPENDENT RESURVEY OF THE COLVILLE GUIDE MERIDIAN DID NOT FIND THIS CORNER. THEY SINGLE PROPORTIONED THE CORNER AFTER LOCATING THE 1/4 CORNER OF SECTIONS 25 AND 30 AT A POINT 1.91 CHAINS WEST OF THEIR FALLING POINT. THIS MAY HAVE CAUSED THE SECTION CORNER OF 25, 36, 30 AND 31 TO BE APPROXIMATELY 40 FEET FARTHER WEST THAN REPORTED BY HULL. IT IS MY OPINION THAT ALTHOUGH THE CORNER WAS CONSIDERED LOST BY THE 1928 DEPENDENT RESURVEY AND RESTORED ACCORDINGLY, THERE MAY HAVE BEEN EVIDENCE WITHIN THE SUBDIVISION OF SECTION 31 THAT HAD BEEN OBSERVED WHEN THE CORNER ORIGINALLY WAS. I ACCEPTED THIS CORNER AS RE-ESTABLISHED PER R5 ALTHOUGH THE BEARING TREE FOUND PER R1 MAY BE THE ONE ESTABLISHED IN THE 1928 SURVEY.
4. THE COORDINATE VALUES SHOWN ARE NAD 83 WASHINGTON STATE PLANE NORTH ZONE GROUND COORDINATES IN FEET BASED ON WSDOT MONUMENT DESIGNATION RED MARBLE HAVING GRID COORDINATE VALUES OF N 457401.631 AND E 2370217.796.

BEARING TREE REFERENCES:

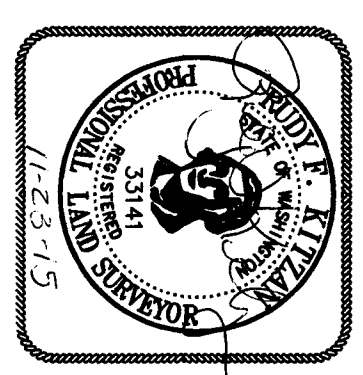
ALL REFERENCE DISTANCES ARE TO A MAG. NAIL WITH BRASS TAG KIZAN #331411 ON THE SIDE OF THE TREE. ALL BEARINGS WERE TAKEN WITH A COMPASS HAVING A DECLINATION ADJUSTMENT OF 16 +/-'. TREES HAVE BEEN SCRIBED WITH THE SECTION, TOWNSHIP AND RANGE.



- LEGEND**
- FOUND MONUMENT AS NOTED
 - ⊙ SET 30" LONG ALUMINUM BREAKAWAY PINE MONUMENT WITH 3" CAP STAMPED WITH THE CORNER DESIGNATION OR CORNER IDENTIFICATION.
 - ⊙ QUARTER CORNER AS NOTED
 - ⊙ SECTION CORNER AS NOTED
 - Ⓟ REFERENCES PAGE 2

EQUIPMENT AND PROCEDURES
THIS SURVEY WAS PERFORMED WITH A SOKKIA GSR2700 ISX GPS DUAL FREQUENCY RECEIVERS. THE METHOD WAS RPK APPLYING A PROJECT COMBINED SCALE FACTOR RPK APPLYING A PROJECT COMBINED SCALE FACTOR. WASHINGTON STATE 2983 EARTHEN SHREVE BEARINGS AND DISTANCES SHOWN ARE GROUND. THE GEOD MODEL WAS 99. THE RELATIVE HORIZONTAL PRECISION ACCURACY WAS +/- .05'

LEGAL DESCRIPTION
PER CORRECTION STATUTORY WARRANTY DEED #470196; IN TOWNSHIP 32 NORTH, RANGE 40 EAST, W.M., IN STEVENS COUNTY, WASHINGTON:
SECTION 31: E 1/2 OF GOVERNMENT LOT 5,
E 1/2 SE 1/4 NE 1/4;
SW 1/4 SW 1/4 NE 1/4;
E 1/2 SE 1/4 NW 1/4;
E 1/2 SE 1/4;
SECTION 32: W 1/2 NW 1/4.



RPK LAND SURVEYING INC.					
1420 WEST GABRIEL AVENUE SPOKANE, WA 99206 TEL: (509) 324-7861 FAX: (509) 327-7249 E-MAIL: jkizan@questoffice.net					
DRAWN	CHECKED	APPROVED	SCALE	PROJECT	
RPK	RPK	RPK	1"=500'	15-109	
DATE	DATE	DATE	SHEET	FIELD BOOK	
11/03/15	11/03/15	11/03/15	3 OF 3	90	