

PEYE CREEK

AT CHEWELAH

IN THE SE 1/4 OF THE NW 1/4, SECTION 14, T32N, R40E, WM.
STEVENS COUNTY 1896 WASHINGTON

TREASURER'S CERTIFICATE

I hereby certify that the above described section, subject to the conditions herein stated, has been donated to the State of Washington for the purpose of creating a public park.

Stevens County Treasurer

SURVEYOR'S CERTIFICATE

I hereby certify that the above described section, subject to the conditions herein stated, has been surveyed and found to contain the area therein stated.

Surveyor

APPROVALS

Accepted and approved this 12th day of _____ 19__ by _____

City Clerk

Accepted and approved this 12th day of _____ 19__ by _____

City Council

DEDICATION

I hereby dedicate to the State of Washington, for public use, the above described section, subject to the conditions herein stated.

Donor

Accepted

Accepted

Accepted

Accepted

Accepted

Accepted

Accepted

Accepted

Accepted

Accepted

Accepted

Accepted

AUDITOR'S CERTIFICATE

I hereby certify that the above described section, subject to the conditions herein stated, has been audited and found to contain the area therein stated.

Auditor

Accepted

Accepted

Accepted

Accepted

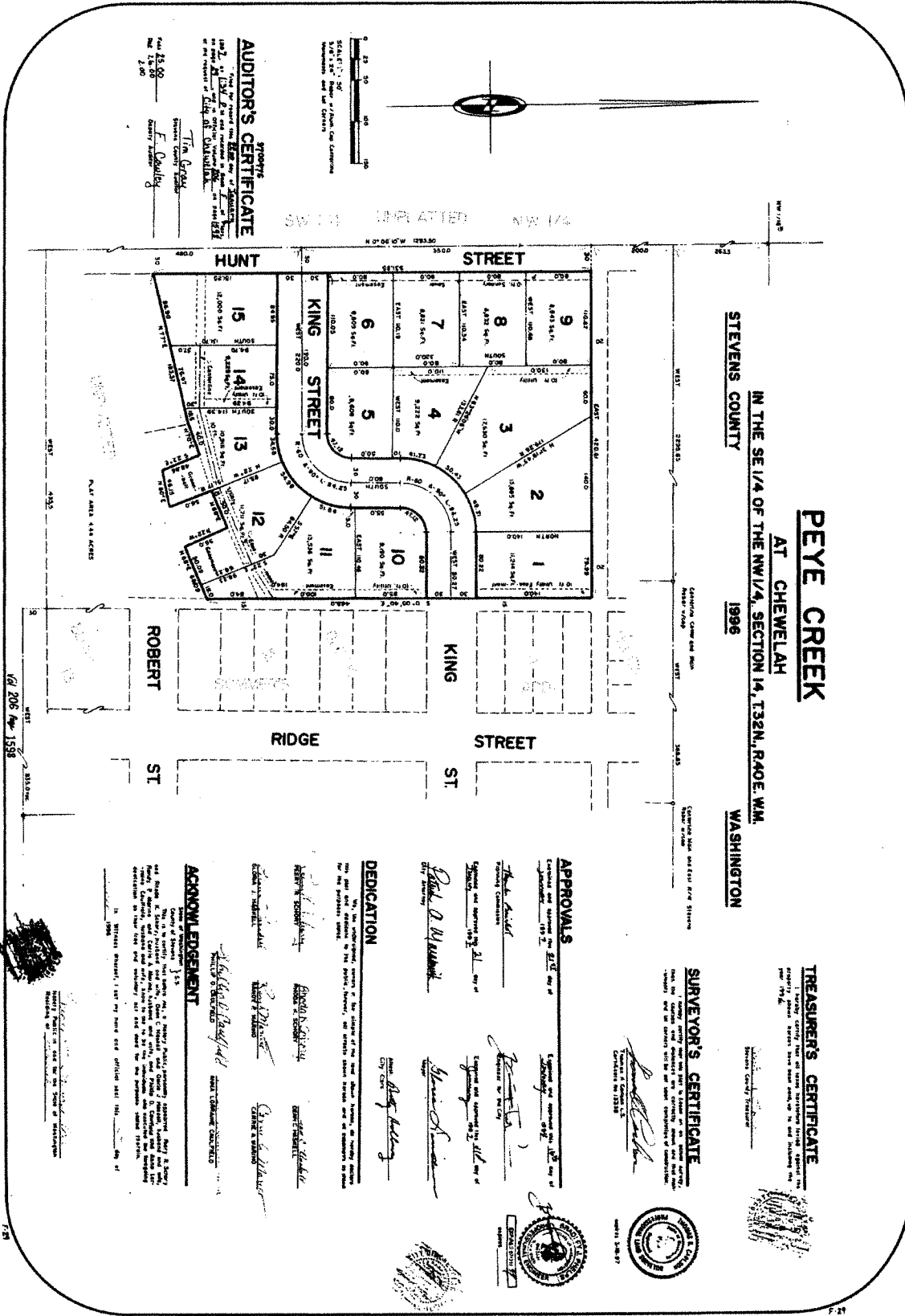
Accepted

Accepted

Accepted

Accepted

Accepted



Vol 206 p 158

1/21