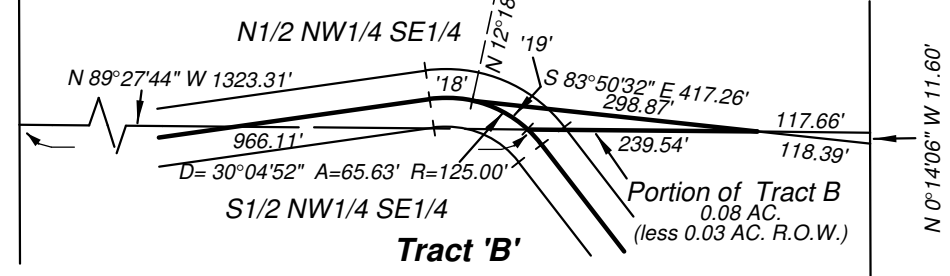


# RECORD of SURVEY

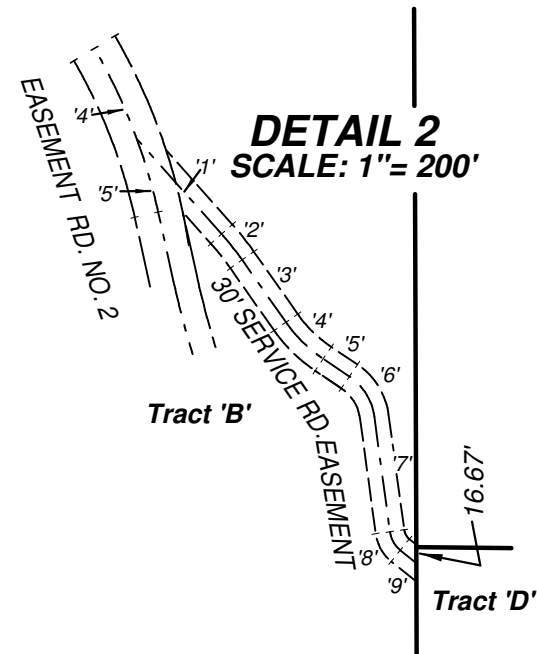
## STRANGER CREEK RANCH TRACTS

Within Sections 19, 20, 29, and 30  
T. 33 N., R. 38 E., W.M., STEVENS COUNTY, WASHINGTON

**DETAIL 1**  
SCALE: 1" = 200'



**DETAIL 2**  
SCALE: 1" = 200'



**SCALE:** 1 INCH = 400 FEET  
400' 0 200' 400' 800'  
1" = 400'

**BASIS OF BEARING:**  
True Meridian as derived by Global Positioning System (GPS) as localized at the corner for Sections 19, 20, 29 and 30 (Corner Index 5)

**LEGEND:**

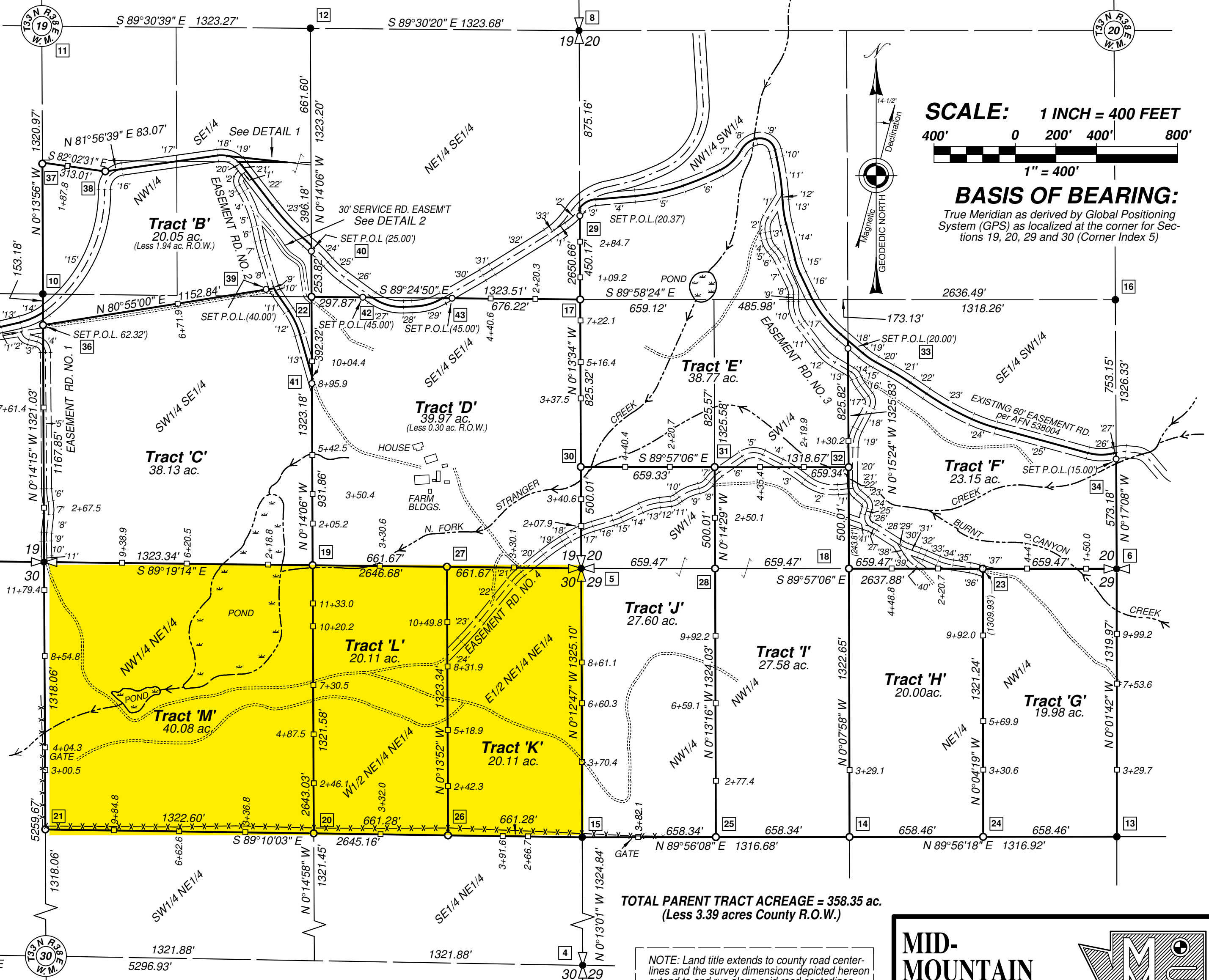
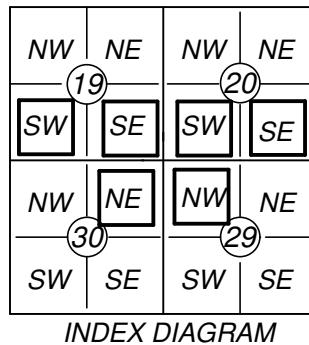
- = FOUND SECTION CORNER (SEE CORNER NOTES)
- = FOUND QUARTER SECTION CORNER (SEE CORNER NOTES)
- = FOUND EXISTENT CORNER (SEE CORNER NOTES)
- = SET CORNER THIS SURVEY: A 5/8" X 24" REBAR WITH 2" ALUM. CAP #20865
- = SET POINT ON LINE: A 5/8" X 24" REBAR WITH 2" ALUM. CAP #20865 AT INDICATED DISTANCE FROM PROPERTY CORNER ON ROAD CENTERLINE.
- = CORNER NOTE INDEX NUMBER (SEE CORNER NOTES)
- = PROPOSED LOCATION OF 50' WIDE EASEMENT FOR ROAD AND UTILITIES (SEE CENTERLINE DATA ON SHEET 2)
- = EXISTING BARBED WIRE FENCE

See Sheet 2 for:  
**DESCRIPTIONS**

See Sheet 2, 3 & 4 for:  
**CORNER NOTES**

See Sheet 4 for:  
**REFERENCES**  
**NARRATIVE**  
**CENTERLINE DATA TABLES**  
**COORDINATE TABLE**

SECTIONS 19, 20, 29 & 30  
T. 33 N., R. 38 E., W.M.



**TOTAL PARENT TRACT ACREAGE = 358.35 ac.**  
(Less 3.39 acres County R.O.W.)

NOTE: Land title extends to county road centerlines and the survey dimensions depicted herein extend to and run along said road centerlines.



**AUDITOR'S CERTIFICATE**

Filed for record this \_\_\_\_\_ day of \_\_\_\_\_, 2026  
at \_\_\_\_\_ M, Page \_\_\_\_\_, Book \_\_\_\_\_ of Surveys.  
At the request of: Forested Habitats, LLC  
AUDITOR'S FILE NO. \_\_\_\_\_  
Stevens County Auditor

**SURVEYOR'S CERTIFICATE**

This map correctly represents a survey performed by me, or under my direction, and in accordance with the Survey Recording Act.  
At the request of: Forested Habitats, LLC  
Beginning in February of 2025.  
Signed and sealed this \_\_\_\_\_ day of \_\_\_\_\_, 2026.  
Grant D. Tolton, P.L.S. Certificate No. 20865



**MID-MOUNTAIN SURVEYORS, INC.**  
Grant D. Tolton  
Professional Land Surveyor  
Certified Federal Surveyor (CFedS)  
4 Mid-Mountain Lane  
Republic, WA 99166  
(509) 775-3563  
www.mid-mtn.com

FILENAME:	M:\A_Jobs\2025\FORRESTED_HABITATS\Drawings\FORRESTED_HABITATS.DWG	
DRAWN BY:	G.D.T.	DATE: 05-09-26
CHECKED BY:	B.G.T.	JOB NO.: 25-003
SCALE:	1" = 400'	SHEET 1 OF 3