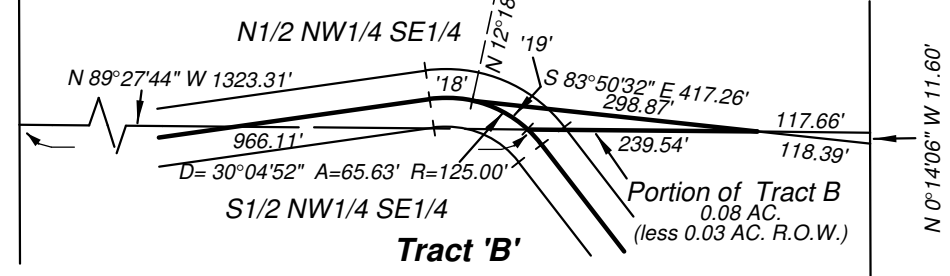


RECORD of SURVEY

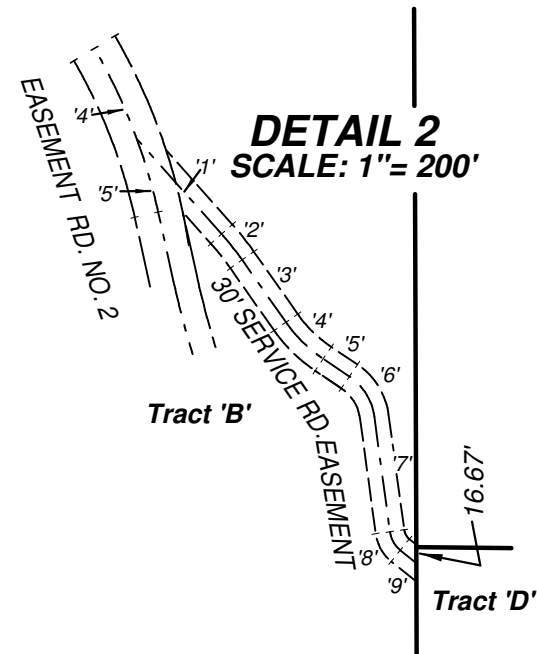
STRANGER CREEK RANCH TRACTS

Within Sections 19, 20, 29, and 30
T. 33 N., R. 38 E., W.M., STEVENS COUNTY, WASHINGTON

DETAIL 1
SCALE: 1" = 200'



DETAIL 2
SCALE: 1" = 200'



SCALE: 1 INCH = 400 FEET
400' 0 200' 400' 800'

1" = 400'

BASIS OF BEARING:
True Meridian as derived by Global Positioning System (GPS) as localized at the corner for Sections 19, 20, 29 and 30 (Corner Index 5)

LEGEND:

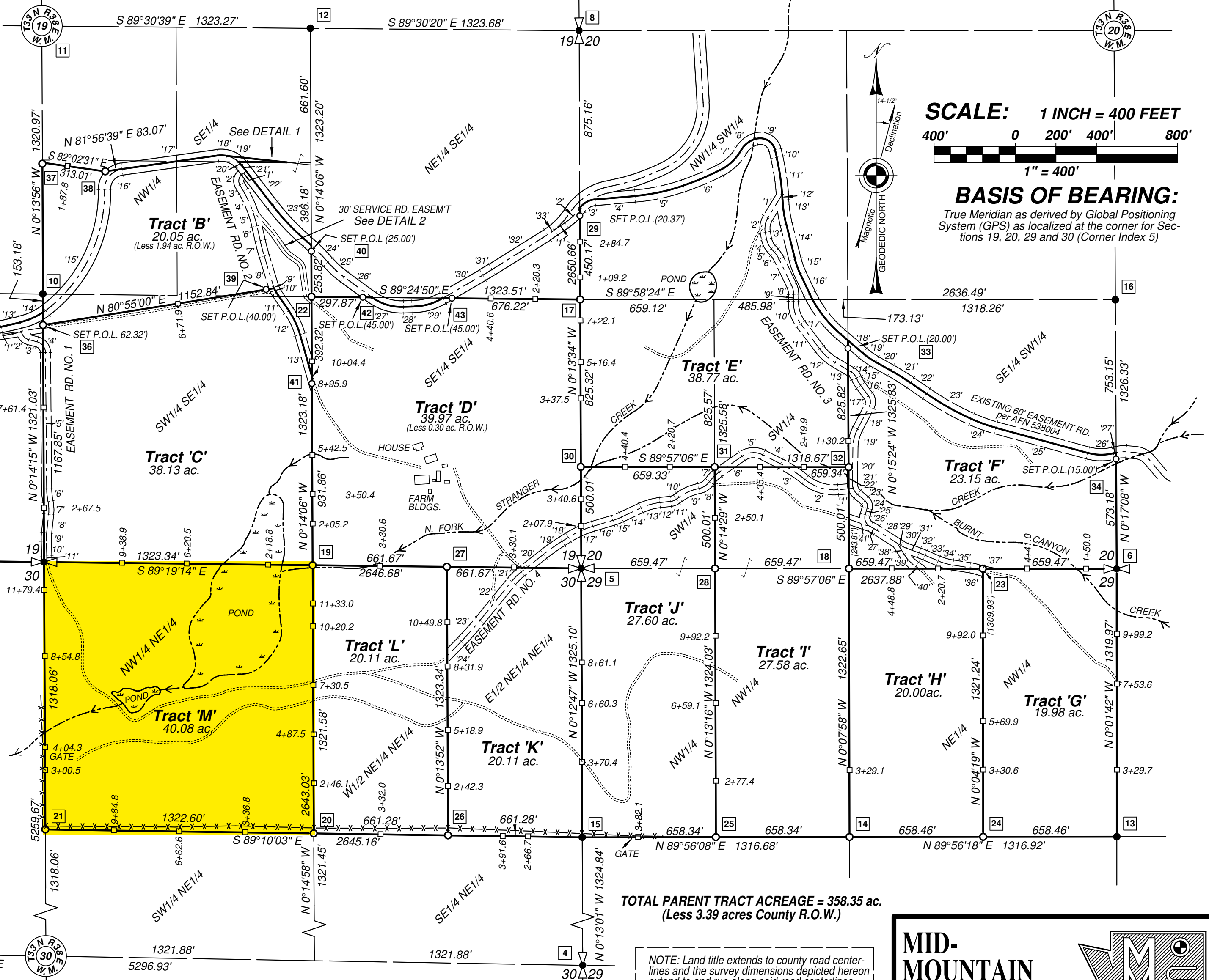
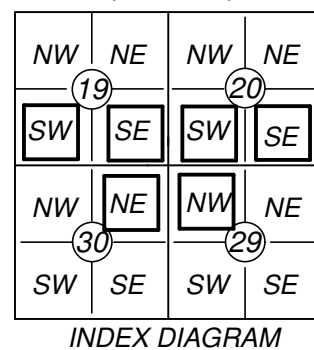
- = FOUND SECTION CORNER (SEE CORNER NOTES)
- = FOUND QUARTER SECTION CORNER (SEE CORNER NOTES)
- = FOUND EXISTENT CORNER (SEE CORNER NOTES)
- = SET CORNER THIS SURVEY: A 5/8" X 24" REBAR WITH 2" ALUM. CAP #20865
- = SET POINT ON LINE: A 5/8" X 24" REBAR WITH 2" ALUM. CAP #20865 AT INDICATED DISTANCE FROM PROPERTY CORNER ON ROAD CENTERLINE.
- = CORNER NOTE INDEX NUMBER (SEE CORNER NOTES)
- = PROPOSED LOCATION OF 50' WIDE EASEMENT FOR ROAD AND UTILITIES (SEE CENTERLINE DATA ON SHEET 2)
- = EXISTING BARBED WIRE FENCE

See Sheet 2 for:
DESCRIPTIONS

See Sheet 2, 3 & 4 for:
CORNER NOTES

See Sheet 4 for:
REFERENCES
NARRATIVE
CENTERLINE DATA TABLES
COORDINATE TABLE

SECTIONS 19, 20, 29 & 30
T. 33 N., R. 38 E., W.M.



TOTAL PARENT TRACT ACREAGE = 358.35 ac.
(Less 3.39 acres County R.O.W.)

NOTE: Land title extends to county road centerlines and the survey dimensions depicted herein extend to and run along said road centerlines.



AUDITOR'S CERTIFICATE

Filed for record this _____ day of _____, 2026
at _____ M, Page _____, Book _____ of Surveys.
At the request of: Forested Habitats, LLC
AUDITOR'S FILE NO. _____
Stevens County Auditor

SURVEYOR'S CERTIFICATE

This map correctly represents a survey performed by me, or under my direction, and in accordance with the Survey Recording Act.
At the request of: Forested Habitats, LLC
Beginning in February of 2025.
Signed and sealed this _____ day of _____, 2026.
Grant D. Tolton, P.L.S. Certificate No. 20865



MID-MOUNTAIN SURVEYORS, INC.
Grant D. Tolton
Professional Land Surveyor
Certified Federal Surveyor (CFedS)
4 Mid-Mountain Lane
Republic, WA 99166
(509) 775-3563
www.mid-mtn.com

FILENAME:	M:\A_Jobs2025\FORRESTED_HABITATS\Drawings\FORRESTED_HABITATS.DWG	
DRAWN BY:	G.D.T.	DATE: 05-09-26
CHECKED BY:	B.G.T.	JOB NO.: 25-003
SCALE:	1" = 400'	SHEET 1 OF 3